

For Research Use Only

# CoraLite® Plus 488-conjugated AMPD2 Monoclonal antibody



Catalog Number: CL488-67430

## Basic Information

Catalog Number:

CL488-67430

Size:

1000 µg/ml

Source:

Mouse

Isotype:

IgG2b

Immunogen Catalog Number:

AG8433

GenBank Accession Number:

BC007711

GeneID (NCBI):

271

UNIPROT ID:

Q01433

Full Name:

adenosine monophosphate  
deaminase 2 (isoform L)

Calculated MW:

879aa, 101 kDa; 798aa, 92 kDa

Observed MW:

101 kDa

Purification Method:

Protein A purification

CloneNo.:

2C4C1

Recommended Dilutions:

IF 1:50-1:500

Excitation/Emission maxima  
wavelengths:

493 nm / 522 nm

## Applications

Tested Applications:

IF/ICC

Species Specificity:

Human, Mouse, Rat

Positive Controls:

IF : HepG2 cells,

## Background Information

Adenosine monophosphate deaminase (AMPD) catalyzes the deamination of AMP to IMP and plays an important role in the purine nucleotide cycle. Three AMPDs are present in mammals named AMPD1/2/3. AMPD2 is the main activity present in adult human liver and is widely expressed in non-muscle tissues and cells (PMID: 8526848). AMPD2 has some isoforms with the molecular mass of 88-101 kDa.

## Storage

Storage:

Store at -20°C. Avoid exposure to light. Stable for one year after shipment.

Storage Buffer:

PBS with 50% Glycerol, 0.05% Proclin300, 0.5% BSA, pH 7.3.

Aliquoting is unnecessary for -20°C storage

For technical support and original validation data for this product please contact:

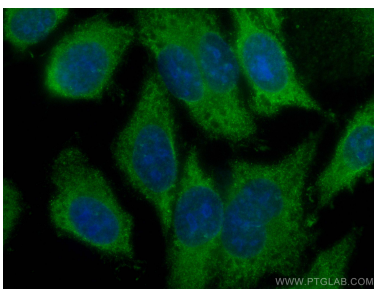
T: 4006900926

E: [Proteintech-CN@ptglab.com](mailto:Proteintech-CN@ptglab.com)

W: [ptgcn.com](http://ptgcn.com)

**This product is exclusively available under Proteintech Group brand and is not available to purchase from any other manufacturer.**

## Selected Validation Data



Immunofluorescent analysis of (-20°C Ethanol) fixed HepG2 cells using CoraLite® Plus 488 AMPD2 antibody (CL488-67430, Clone: 2C4C1) at dilution of 1:200.