

For Research Use Only

# CoraLite® Plus 488-conjugated BSEP Monoclonal antibody



Catalog Number: CL488-67512

## Basic Information

Catalog Number:

CL488-67512

Size:

1000 µg/ml

Source:

Mouse

Isotype:

IgG1

Immunogen Catalog Number:

AG29135

GenBank Accession Number:

NM\_003742

GeneID (NCBI):

8647

UNIPROT ID:

O95342

Full Name:

ATP-binding cassette, sub-family B (MDR/TAP), member 11

Calculated MW:

146 kDa

Observed MW:

150-160 kDa

Purification Method:

Protein G purification

CloneNo.:

3C11D5

Recommended Dilutions:

IF 1:50-1:500

Excitation/Emission maxima

wavelengths:

493 nm / 522 nm

## Applications

Tested Applications:

IF/ICC

Species Specificity:

Human

Positive Controls:

IF : HeLa cells,

## Background Information

ABCB11, also named as BSEP, belongs to the ABC transporter superfamily. ABCB11 involved in the ATP-dependent secretion of bile salts into the canaliculus of hepatocytes. Mutation of ABCB11 will cause the progressive familial intrahepatic cholestasis type 2 (PFIC2) and the benign recurrent intrahepatic cholestasis type 2 (BRIC2). Genetic variations in ABCB11 may play a role in drug-induced cholestasis causing liver damage.

## Storage

Storage:

Store at -20°C. Avoid exposure to light.

Storage Buffer:

PBS with 50% Glycerol, 0.05% Proclin300, 0.5% BSA, pH 7.3.

Aliquoting is unnecessary for -20°C storage

For technical support and original validation data for this product please contact:

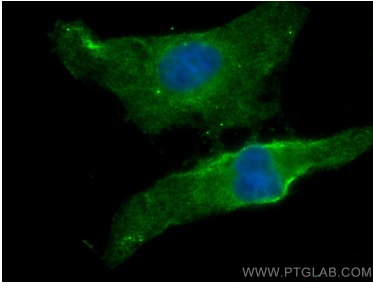
T: 4006900926

E: [Proteintech-CN@ptglab.com](mailto:Proteintech-CN@ptglab.com)

W: [ptgcn.com](http://ptgcn.com)

This product is exclusively available under Proteintech Group brand and is not available to purchase from any other manufacturer.

## Selected Validation Data



Immunofluorescent analysis of (4% PFA) fixed HeLa cells using Coralite® Plus 488 BSEP antibody (CL488-67512, Clone: 3C11D5) at dilution of 1:200. Blue (DAPI).