

For Research Use Only

CoraLite® Plus 488-conjugated Tim23 Monoclonal antibody



Catalog Number: CL488-67535

Basic Information

Catalog Number: CL488-67535	GenBank Accession Number: BC062707	Purification Method: Protein G purification
Size: 1000 µg/ml	GeneID (NCBI): 10431	CloneNo.: 3H10F5
Source: Mouse	UNIPROT ID: O14925	Recommended Dilutions: IF 1:50-1:500
Isotype: IgG1	Full Name: translocase of inner mitochondrial membrane 23 homolog (yeast)	Excitation/Emission maxima wavelengths: 493 nm / 522 nm
Immunogen Catalog Number: AG27069	Calculated MW: 22 kDa	
	Observed MW: 21 kDa	

Applications

Tested Applications: IF/ICC	Positive Controls: IF : HepG2 cells,
Species Specificity: Human, Mouse, Rat	

Background Information

Tim23 is a mitochondrial inner membrane protein essential for import of preproteins into the matrix. Tim23 together with Tim17 and Tim44 form the Tim23 complex which mediates the import of nuclear encoded preproteins into the mitochondria. Tim23 is commonly used as loading control for mitochondrial inner membrane protein.

Storage

Storage:
Store at -20°C. Avoid exposure to light.
Storage Buffer:
PBS with 50% Glycerol, 0.05% Proclin300, 0.5% BSA, pH 7.3.
Aliquoting is unnecessary for -20°C storage

For technical support and original validation data for this product please contact:

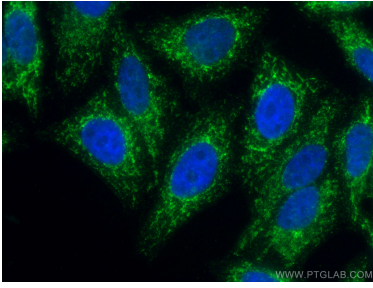
T: 4006900926

E: Proteintech-CN@ptglab.com

W: ptgcn.com

This product is exclusively available under Proteintech Group brand and is not available to purchase from any other manufacturer.

Selected Validation Data



Immunofluorescent analysis of (4% PFA) fixed HepG2 cells using CoraLite® Plus 488 Tim23 antibody (CL488-67535, Clone: 3H10F5) at dilution of 1:200.