

For Research Use Only

# CoraLite® Plus 488-conjugated Centrin 1 Monoclonal antibody



Catalog Number: **CL488-68433**

## Basic Information

<b>Catalog Number:</b> CL488-68433	<b>GenBank Accession Number:</b> BC029515	<b>Purification Method:</b> Protein A purification
<b>Size:</b> 1000 µg/ml	<b>GeneID (NCBI):</b> 1068	<b>CloneNo.:</b> 1G8D10
<b>Source:</b> Mouse	<b>UNIPROT ID:</b> Q12798	<b>Recommended Dilutions:</b> IF 1:50-1:500
<b>Isotype:</b> IgG2b	<b>Full Name:</b> centrin, EF-hand protein, 1	<b>Excitation/Emission maxima wavelengths:</b> 493 nm / 522 nm
<b>Immunogen Catalog Number:</b> AG3529	<b>Calculated MW:</b> 172 aa, 20 kDa	
	<b>Observed MW:</b> 20 kDa	

## Applications

<b>Tested Applications:</b> IF/ICC	<b>Positive Controls:</b> IF : HeLa cells,
<b>Species Specificity:</b> Human	

## Background Information

EF-hand type Ca<sup>2+</sup>-binding proteins consists of several family members, including Centrin-1, Centrin-2 and Centrin-3. The Centrin proteins are ubiquitously expressed cytoskeletal components that show increased expression during cell differentiation. Centrin-1 plays important roles in the determination of centrosome position and segregation, and in the process of microtubule severing. Centrin-1 is localized to the centrosome of interphase cells, and redistributes to the region of the spindle poles during mitosis, reflecting the dynamic behavior of the centrosome during the cell cycle.

## Storage

**Storage:**  
Store at -20°C. Avoid exposure to light. Stable for one year after shipment.  
**Storage Buffer:**  
PBS with 50% Glycerol, 0.05% Proclin300, 0.5% BSA, pH 7.3.  
Aliquoting is unnecessary for -20°C storage

For technical support and original validation data for this product please contact:

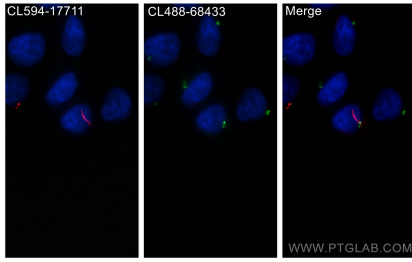
T: 4006900926

E: [Proteintech-CN@ptglab.com](mailto:Proteintech-CN@ptglab.com)

W: [ptgcn.com](http://ptgcn.com)

**This product is exclusively available under Proteintech Group brand and is not available to purchase from any other manufacturer.**

## Selected Validation Data



Immunofluorescent analysis of (4% PFA) fixed HeLa cells using CoraLite® Plus 488 Centrin 1 antibody (CL488-68433, Clone: 1G8D10) at dilution of 1:200.