

For Research Use Only

CoraLite® Plus 488-conjugated ENO1/2/3 Recombinant antibody



Catalog Number: CL488-81504

Basic Information

Catalog Number: CL488-81504	GenBank Accession Number: BC015641	Purification Method: Protein A purification
Size: 1000 µg/ml	GeneID (NCBI): 2023	CloneNo.: 6E24
Source: Rabbit	ENSEMBL Gene ID: ENSG00000074800	Recommended Dilutions: IF 1:200-1:800
Isotype: IgG	UNIPROT ID: P06733	Excitation/Emission maxima wavelengths: 493 nm / 522 nm
Immunogen Catalog Number: AG1692	Full Name: enolase 1, (alpha)	
	Calculated MW: 47 kDa	
	Observed MW: 47 kDa	

Applications

Tested Applications: IF/ICC	Positive Controls: IF : HepG2 cells,
Species Specificity: Human, Mouse, Rat, Pig	

Background Information

Enolase (ENO), also known as 2-phospho-D-glycerate hydrolase, is a metalloenzyme that catalyzes the dehydration of 2-phospho-D-glycerate into phosphoenolpyruvate in the glycolytic pathway. There are three different ENO isoforms in higher eukaryotes, including ENO1 or α -ENO, ENO2 or γ -ENO, and ENO3 or β -ENO. Furthermore, the expression of the different ENO isoforms is tissue specificity. ENO1 is expressed in almost all kinds of tissue, whereas ENO3 is restricted to muscle tissues and ENO2 is described as a neuron- and neuroendocrine tissue-specific enolase. ENO1 serves multifunctional roles in physiological and pathological processes. (PMID: 32256815). This antibody can recognize ENO1, ENO2, and ENO3.

Storage

Storage:
Store at -20°C. Avoid exposure to light. Stable for one year after shipment.
Storage Buffer:
PBS with 50% Glycerol, 0.05% Proclin300, 0.5% BSA, pH 7.3.
Aliquoting is unnecessary for -20°C storage

For technical support and original validation data for this product please contact:

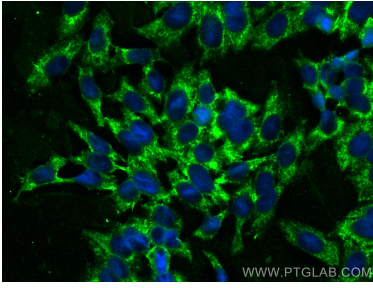
T: 4006900926

E: Proteintech-CN@ptglab.com

W: ptgcn.com

This product is exclusively available under Proteintech Group brand and is not available to purchase from any other manufacturer.

Selected Validation Data



Immunofluorescent analysis of (-20°C Ethanol)
fixed HepG2 cells using CoraLite® Plus 488
ENO1/2/3 antibody (CL488-81504, Clone: 6E24) at
dilution of 1:400.