

For Research Use Only

CoraLite®555-conjugated Cytokeratin 7 Monoclonal antibody



Catalog Number:CL555-66483

Featured Product

Basic Information

Catalog Number:

CL555-66483

Size:

1000 µg/ml

Source:

Mouse

Isotype:

IgG2a

Immunogen Catalog Number:

AG7895

GenBank Accession Number:

BC002700

GeneID (NCBI):

3855

UNIPROT ID:

P08729

Full Name:

keratin 7

Calculated MW:

469 aa, 51 kDa

Observed MW:

51 kDa

Purification Method:

Protein A purification

CloneNo.:

2E1G5

Recommended Dilutions:

IF 1:50-1:500

Excitation/Emission maxima
wavelengths:

557 nm / 570nm

Applications

Tested Applications:

FC(Intra), IF-P

Species Specificity:

Human

Positive Controls:

IF : human prostate cancer tissue,

Background Information

Keratins are a large family of proteins that form the intermediate filament cytoskeleton of epithelial cells, which are classified into two major sequence types. Type I keratins are a group of acidic intermediate filament proteins, including K9-K23, and the hair keratins Ha1-Ha8. Type II keratins are the basic or neutral counterparts to the acidic type I keratins, including K1-K8, and the hair keratins, Hb1-Hb6. KRT7, also named as cytokeratin 7, is one member of type II basic cytokeratin. It is specifically expressed in the simple epithelia lining the cavities of the internal organs and in the gland ducts and blood vessels, and their neoplasms. KRT7 is marker of epithelial tissues, but not present in carcinomas of stratified squamous cell origin. This antibody is specifically against KRT7.

Storage

Storage:

Store at -20°C. Avoid exposure to light. Stable for one year after shipment.

Storage Buffer:

PBS with 50% Glycerol, 0.05% Proclin300, 0.5% BSA, pH 7.3.

Aliquoting is unnecessary for -20°C storage

For technical support and original validation data for this product please contact:

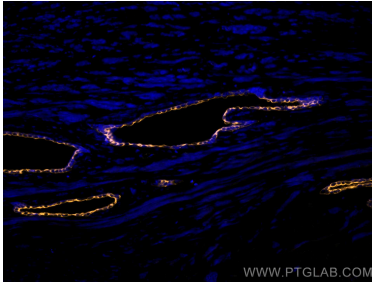
T: 4006900926

E: Proteintech-CN@ptglab.com

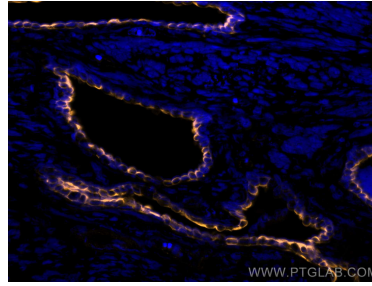
W: ptgcn.com

This product is exclusively available under Proteintech Group brand and is not available to purchase from any other manufacturer.

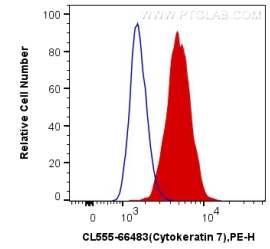
Selected Validation Data



Immunofluorescent analysis of (4% PFA) fixed human prostate cancer tissue using CoraLite®555 Cytokeratin 7 antibody (CL555-66483, Clone: 2E1G5) at dilution of 1:200.



Immunofluorescent analysis of (4% PFA) fixed human prostate cancer tissue using CoraLite®555 Cytokeratin 7 antibody (CL555-66483, Clone: 2E1G5) at dilution of 1:200.



1X10⁶ HeLa cells were intracellularly stained with 0.5 ug CoraLite®555 Anti-Human Cytokeratin 7 (CL555-66483, Clone:2E1G5) (red), or 0.5 ug Control Antibody. Cells were fixed with 4% PFA and permeabilized with Flow Cytometry Perm Buffer (PF00011-C).