

# CoraLite®594-conjugated Fis1 Polyclonal antibody

Catalog Number: CL594-10956

Featured Product

## Basic Information

**Catalog Number:**

CL594-10956

**Size:**

1000 µg/ml

**Source:**

Rabbit

**Isotype:**

IgG1

**Immunogen Catalog Number:**

AG1409

**GenBank Accession Number:**

BC009428

**GeneID (NCBI):**

51024

**UNIPROT ID:**

Q9Y3D6

**Full Name:**

fission 1 (mitochondrial outer membrane) homolog (S. cerevisiae)

**Calculated MW:**

17 kDa

**Observed MW:**

17 kDa

**Purification Method:**

Antigen affinity purification

**Recommended Dilutions:**

IF 1:50-1:500

**Excitation/Emission maxima wavelengths:**

588 nm / 604 nm

## Applications

**Tested Applications:**

IF/ICC

**Species Specificity:**

human, mouse, rat, pig

**Positive Controls:**

IF : HepG2 cells,

## Background Information

Fis1 (fission 1) is an integral mitochondrial outer membrane protein that participates in mitochondrial fission by interacting with dynamin-related protein 1 (Drp1). Excessive mitochondrial fission is associated with the pathology of a number of neurodegenerative or neurodevelopmental diseases. Increased expression of Fis1 has been found in Huntington's disease (HD)-affected brain, Alzheimer's disease (AD) patients, and autism spectrum disorder. This antibody was raised against the full-length of human Fis1 protein, and recognizes endogenous Fis1 protein in various lysates. (PMID: 21257639, 21459773, 23333625)

## Storage

**Storage:**

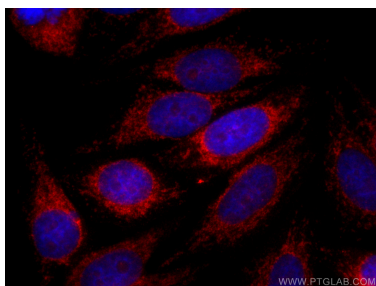
Store at -20°C. Avoid exposure to light.

**Storage Buffer:**

PBS with 50% Glycerol, 0.05% Proclin300, 0.5% BSA, pH 7.3.

Aliquoting is unnecessary for -20°C storage

## Selected Validation Data



Immunofluorescent analysis of (4% PFA) fixed HepG2 cells using Coralite®594 F1S1 antibody (CL594-10956) at dilution of 1:200.