

For Research Use Only

# CoraLite®594-conjugated GOT1 Monoclonal antibody



Catalog Number:CL594-60317

## Basic Information

<b>Catalog Number:</b> CL594-60317	<b>GenBank Accession Number:</b> BC000498	<b>Purification Method:</b> Protein G purification
<b>Size:</b> 1000 µg/ml	<b>GeneID (NCBI):</b> 2805	<b>CloneNo.:</b> 5A12E10
<b>Source:</b> Mouse	<b>UNIPROT ID:</b> P17174	<b>Recommended Dilutions:</b> IF 1:50-1:500
<b>Isotype:</b> IgG1	<b>Full Name:</b> glutamic-oxaloacetic transaminase 1, soluble (aspartate aminotransferase 1)	<b>Excitation/Emission maxima wavelengths:</b> 588 nm / 604 nm
<b>Immunogen Catalog Number:</b> AG7012	<b>Calculated MW:</b> 46 kDa	
	<b>Observed MW:</b> 40-46 kDa	

## Applications

<b>Tested Applications:</b> IF/ICC	<b>Positive Controls:</b> IF : HepG2 cells,
<b>Species Specificity:</b> human	

## Background Information

Glutamate oxaloacetate transaminase 1 (GOT1) catalyzes the reversible reaction of L-aspartate and alpha-ketoglutarate into oxaloacetate and L-glutamate and plays a key role in carbon and nitrogen metabolism. GOT1 can potentially control the intracellular levels of reactive oxygen species (ROS) through NADPH synthesis and enhances tumor growth. GOT1 expression correlates with the growth of several tumors.

## Storage

**Storage:**  
Store at -20°C. Avoid exposure to light. Stable for one year after shipment.  
**Storage Buffer:**  
PBS with 50% Glycerol, 0.05% Proclin300, 0.5% BSA, pH 7.3.  
Aliquoting is unnecessary for -20°C storage

For technical support and original validation data for this product please contact:

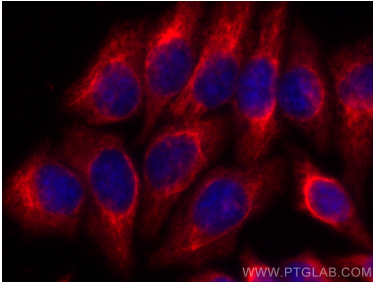
T: 4006900926

E: [Proteintech-CN@ptglab.com](mailto:Proteintech-CN@ptglab.com)

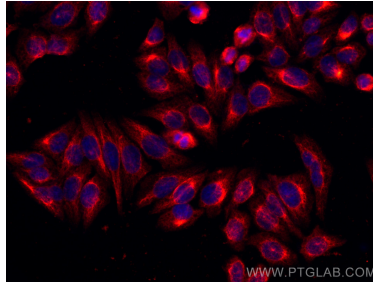
W: [ptgcn.com](http://ptgcn.com)

This product is exclusively available under Proteintech Group brand and is not available to purchase from any other manufacturer.

## Selected Validation Data



Immunofluorescent analysis of (-20°C Ethanol) fixed HepG2 cells using CoraLite®594 GOT1 antibody (CL594-60317, Clone: 5A12E10) at dilution of 1:200.



Immunofluorescent analysis of (-20°C Ethanol) fixed HepG2 cells using CoraLite®594 GOT1 antibody (CL594-60317, Clone: 5A12E10) at dilution of 1:200.