

For Research Use Only

CoraLite®594-conjugated SEC5/EXOC2 Monoclonal antibody



Catalog Number:CL594-66011

Basic Information

Catalog Number:

CL594-66011

Size:

1000 µg/ml

Source:

Mouse

Isotype:

IgG2b

Immunogen Catalog Number:

AG17866

GenBank Accession Number:

BC016918

GeneID (NCBI):

55770

UNIPROT ID:

Q96KP1

Full Name:

exocyst complex component 2

Calculated MW:

924 aa, 104 kDa

Observed MW:

100 kDa

Purification Method:

Protein A purification

CloneNo.:

1C11G2

Recommended Dilutions:

IF 1:50-1:500

**Excitation/Emission maxima
wavelengths:**

588 nm / 604 nm

Applications

Tested Applications:

IF/ICC

Species Specificity:

human, mouse, pig, rat

Positive Controls:

IF : HeLa cells,

Background Information

EXOC2 (exocyst complex component 2), also known as SEC5 and SEC5L1, is a component of the exocyst complex, and is required to mediate RalB-dependent survival signals in transformed cells. The exocyst complex, composed of eight evolutionarily conserved subunits (SEC3, SEC5, SEC6, SEC8, SEC10, SEC15, EXO70, and EXO84), is involved in tethering post-Golgi secretory vesicles to specific plasma membrane domains. The gene of EXOC2 maps to chromosome 6p25.3, and encodes a 924-amino acid protein with an experimentally determined molecular mass of 95-100 kDa. EXOC2 mRNA is widely expressed with highest levels in brain and placenta.

Storage

Storage:

Store at -20°C. Avoid exposure to light. Stable for one year after shipment.

Storage Buffer:

PBS with 50% Glycerol, 0.05% Proclin300, 0.5% BSA, pH 7.3.

Aliquoting is unnecessary for -20°C storage

For technical support and original validation data for this product please contact:

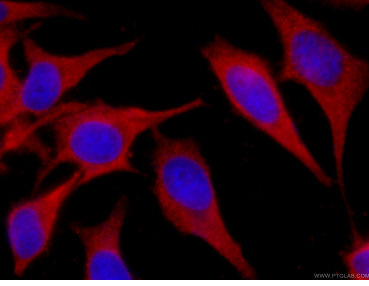
T: 4006900926

E: Proteintech-CN@ptglab.com

W: ptgcn.com

This product is exclusively available under Proteintech Group brand and is not available to purchase from any other manufacturer.

Selected Validation Data



Immunofluorescent analysis of (-20°C Ethanol) fixed HeLa cells using CL594-66011 (SEC5/EXOC2 antibody) at dilution of 1:100.