

For Research Use Only

CoraLite®594-conjugated Annexin V Monoclonal antibody



Catalog Number:CL594-66245

Basic Information

Catalog Number: CL594-66245	GenBank Accession Number: BC001429	Purification Method: Protein G purification
Size: 1000 µg/ml	GeneID (NCBI): 308	CloneNo.: 1E6A8
Source: Mouse	UNIPROT ID: P08758	Recommended Dilutions: IF 1:50-1:500
Isotype: IgG1	Full Name: annexin A5	Excitation/Emission maxima wavelengths: 588 nm / 604 nm
Immunogen Catalog Number: AG1538	Calculated MW: 36 kDa	

Applications

Tested Applications: FC (Intra), IF/ICC	Positive Controls: IF : HeLa cells,
Species Specificity: human	

Background Information

Annexin A5 (ANXA5), is a member of the structurally related family of annexin proteins some of which have been implicated in membrane-related events along exocytotic and endocytotic pathways. Annexin 5 is a phospholipase A2 and protein kinase C inhibitory protein with calcium channel activity and a potential role in cellular signal transduction, inflammation, growth and differentiation. Annexin 5 has also been described as placental anticoagulant protein I, vascular anticoagulant-alpha, endonexin II, lipocortin V, placental protein 4 and anchorin CII. This antibody is conjugated with CL594, Ex/Em 593 nm/614 nm.

Storage

Storage:
Store at -20°C. Avoid exposure to light. Stable for one year after shipment.
Storage Buffer:
PBS with 50% Glycerol, 0.05% Proclin300, 0.5% BSA, pH 7.3.
Aliquoting is unnecessary for -20°C storage

For technical support and original validation data for this product please contact:

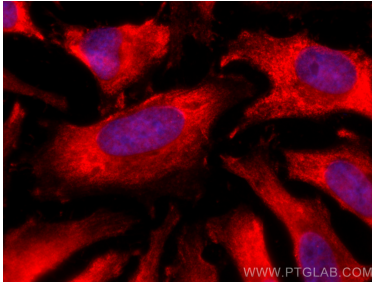
T: 4006900926

E: Proteintech-CN@ptglab.com

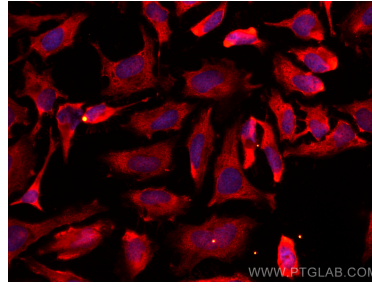
W: ptgcn.com

This product is exclusively available under Proteintech Group brand and is not available to purchase from any other manufacturer.

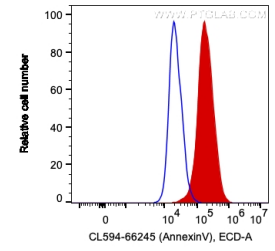
Selected Validation Data



Immunofluorescent analysis of (-20°C Ethanol) fixed HeLa cells using CoraLite@594 Annexin V antibody (CL594-66245, Clone: 1E6A8) at dilution of 1:200.



Immunofluorescent analysis of (-20°C Ethanol) fixed HeLa cells using CoraLite@594 Annexin V antibody (CL594-66245, Clone: 1E6A8) at dilution of 1:200.



1X10⁶ HeLa cells were intracellularly stained with 0.2 ug CoraLite@594 Anti-Human Annexin V (CL594-66245, Clone:1E6A8) (red), or 0.2 ug Mouse IgG1 Isotype Control (CL594-66360, Clone: T1F8D3F10) (blue). Cells were fixed with 4% PFA and permeabilized with Intracellular Staining Permeabilization Wash Buffer.