

# CoraLite®594-conjugated CLTC

## Monoclonal antibody

Catalog Number: **CL594-66487****Featured Product**

### Basic Information

**Catalog Number:**

CL594-66487

**Size:**

1000 µg/ml

**Source:**

Mouse

**Isotype:**

IgG1

**Immunogen Catalog Number:**

AG25040

**GenBank Accession Number:**

BC054489

**GeneID (NCBI):**

1213

**UNIPROT ID:**

Q00610

**Full Name:**

clathrin, heavy chain (Hc)

**Calculated MW:**

192 kDa

**Observed MW:**

170 kDa

**Purification Method:**

Protein G purification

**CloneNo.:**

1B3D7

**Recommended Dilutions:**

IF 1:50-1:500

**Excitation/Emission maxima wavelengths:**

588 nm / 604 nm

### Applications

**Tested Applications:**

IF/ICC

**Species Specificity:**

Human, Pig, Mouse, Rat

**Positive Controls:**

IF : HepG2 cells,

### Background Information

Clathrin is the major protein of the polyhedral coat of coated pits and vesicles which entrap specific macromolecules during receptor-mediated endocytosis. The clathrin molecule has a triskelion shape. Each clathrin triskelion is composed of three identical heavy chains (CLTC) (160-190 kDa) and three light chains of two types, LCA (CLTA) and LCB (CLTB) (30-40 kDa). The heavy chain provides the structural backbone of the clathrin lattice. (PMID: 9133677)

### Storage

**Storage:**

Store at -20°C. Avoid exposure to light. Stable for one year after shipment.

**Storage Buffer:**

PBS with 50% Glycerol, 0.05% Proclin300, 0.5% BSA, pH 7.3.

Aliquoting is unnecessary for -20°C storage

For technical support and original validation data for this product please contact:

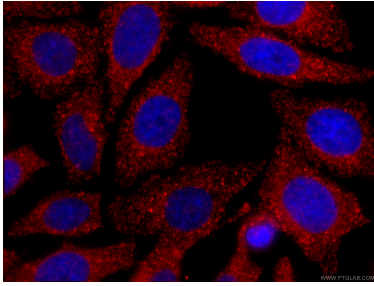
T: 4006900926

E: [Proteintech-CN@ptglab.com](mailto:Proteintech-CN@ptglab.com)W: [ptgcn.com](http://ptgcn.com)

This product is exclusively available under Proteintech Group brand and is not available to purchase from any other manufacturer.

---

## Selected Validation Data



Immunofluorescent analysis of (-20°C Ethanol) fixed HepG2 cells using CL594-66487 (CLTC antibody) at dilution of 1:100.