

For Research Use Only

CoraLite® Plus 594-conjugated TLR5 Monoclonal antibody



Catalog Number: CL594-66570

Basic Information

Catalog Number: CL594-66570	GenBank Accession Number: BC109119	Purification Method: Protein G purification
Size: 1000 µg/ml	GeneID (NCBI): 7100	CloneNo.: 4B3D2
Source: Mouse	UNIPROT ID: O60602	Excitation/Emission maxima wavelengths: 594 nm / 615 nm
Isotype: IgG1	Full Name: toll-like receptor 5	
Immunogen Catalog Number: AG13840	Calculated MW: 858 aa, 98 kDa	
	Observed MW: 100 kDa	

Applications

Tested Applications:
FC (Intra)

Species Specificity:
Human, Pig, Mouse, Rat

Background Information

TLR5 belongs to the Toll-like receptor family which are important in the innate immune response to pathogens. TLRs are highly conserved from Drosophila to humans and share structural and functional similarities. TLR5 is known to recognize bacterial flagellin from invading mobile bacteria. TLR5 acts via MYD88 and TRAF6, leading to NF-kappa-B activation, cytokine secretion and the inflammatory response. Mutations in TLR5 gene have been associated with both resistance and susceptibility to systemic lupus erythematosus, and susceptibility to Legionnaire disease.

Storage

Storage:
Store at -20°C. Avoid exposure to light. Stable for one year after shipment.

Storage Buffer:
PBS with 50% Glycerol, 0.05% Proclin300, 0.5% BSA, pH 7.3.

Aliquoting is unnecessary for -20°C storage

For technical support and original validation data for this product please contact:

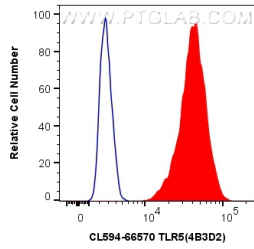
T: 4006900926

E: Proteintech-CN@ptglab.com

W: ptgcn.com

This product is exclusively available under Proteintech Group brand and is not available to purchase from any other manufacturer.

Selected Validation Data



1X10⁶ THP-1 cells were intracellularly stained with 0.8 ug CoraLite® Plus 594 Anti-Human TLR5 (CL594-66570, Clone:4B3D2) (red), or 0.8 ug CoraLite®594 Mouse IgG1 Isotype Control (MOPC-21) (CL594-65124, Clone: MOPC-21) (blue). Cells were fixed with 4% PFA and permeabilized with Flow Cytometry Perm Buffer (PF00011-C).