

For Research Use Only

# CoraLite®594-conjugated TSH Beta Monoclonal antibody



Catalog Number:CL594-66750

## Basic Information

Catalog Number:

CL594-66750

Size:

1000 µg/ml

Source:

Mouse

Isotype:

IgG2b

Immunogen Catalog Number:

AG27153

GenBank Accession Number:

BC069298

GeneID (NCBI):

7252

UNIPROT ID:

P01222

Full Name:

thyroid stimulating hormone, beta

Calculated MW:

138 aa, 16 kDa

Purification Method:

Protein A purification

CloneNo.:

2G1H3

Recommended Dilutions:

IF 1:50-1:500

Excitation/Emission maxima

wavelengths:

588 nm / 604 nm

## Applications

Tested Applications:

IF-P

Species Specificity:

Human

Positive Controls:

IF : human pituitary tissue,

## Background Information

### Storage

Storage:

Store at -20°C. Avoid exposure to light.

Storage Buffer:

PBS with 50% Glycerol, 0.05% Proclin300, 0.5% BSA, pH 7.3.

Aliquoting is unnecessary for -20°C storage

For technical support and original validation data for this product please contact:

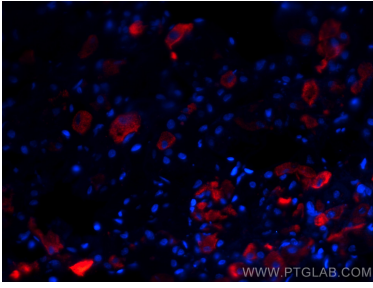
T: 4006900926

E: [Proteintech-CN@ptglab.com](mailto:Proteintech-CN@ptglab.com)

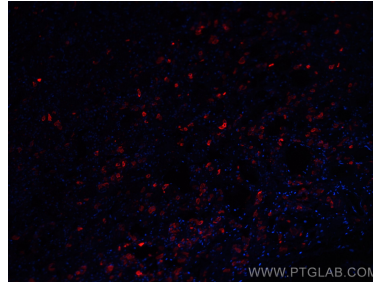
W: [ptgcn.com](http://ptgcn.com)

This product is exclusively available under Proteintech Group brand and is not available to purchase from any other manufacturer.

## Selected Validation Data



Immunofluorescent analysis of (4% PFA) fixed human pituitary tissue using Coralite®594 TSH Beta antibody (CL594-66750, Clone: 2G1H3 ) at dilution of 1:200.



Immunofluorescent analysis of (4% PFA) fixed human pituitary tissue using Coralite®594 TSH Beta antibody (CL594-66750, Clone: 2G1H3 ) at dilution of 1:200.