

For Research Use Only

CoraLite®594-conjugated MBNL1 Monoclonal antibody



Catalog Number:CL594-66837

Basic Information

Catalog Number:

CL594-66837

Size:

1000 µg/ml

Source:

Mouse

Isotype:

IgG1

Immunogen Catalog Number:

AG7752

GenBank Accession Number:

BC050535

GeneID (NCBI):

4154

UNIPROT ID:

Q9NR56

Full Name:

muscleblind-like (Drosophila)

Calculated MW:

42 kDa

Observed MW:

40 kDa

Purification Method:

Protein G purification

CloneNo.:

1H2C12

Recommended Dilutions:

IF 1:50-1:500

Excitation/Emission maxima
wavelengths:

588 nm / 604 nm

Applications

Tested Applications:

IF/ICC

Species Specificity:

Human, mouse, rat, pig

Positive Controls:

IF : A431 cells,

Background Information

MBNL1 (muscleblind-like 1) is one of the MBNL proteins containing 3 members (MBNL1-3) in vertebrates. And MBNL1 is widely expressed in adult tissues including brain, heart and skeletal muscle (PMID:25274774). As a highly conserved RNA-binding protein, MBNL1 regulates alternative splicing, alternative polyadenylation, mRNA stability and mRNA localization in the nucleus. The neurological diseases DM1 and DM2 (myotonic dystrophy type 1 and type2) are caused by expansion of repetitive sequences in non-coding regions in the DMPK gene because of the inappropriate patterns of alternative splicing owing to MBNL1(PMID:24354850). The antibody could recognize the common full-length protein in applications.

Storage

Storage:

Store at -20°C. Avoid exposure to light. Stable for one year after shipment.

Storage Buffer:

PBS with 50% Glycerol, 0.05% Proclin300, 0.5% BSA, pH 7.3.

Aliquoting is unnecessary for -20°C storage

For technical support and original validation data for this product please contact:

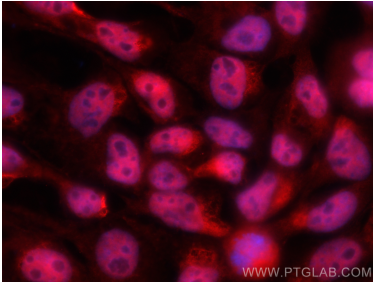
T: 4006900926

E: Proteintech-CN@ptglab.com

W: ptgcn.com

This product is exclusively available under Proteintech Group brand and is not available to purchase from any other manufacturer.

Selected Validation Data



Immunofluorescent analysis of (4% PFA) fixed A431 cells using CoraLite@594 MBNL1 antibody (CL594-66837, Clone: 1H2C12) at dilution of 1:200.