

For Research Use Only

# CoraLite®594-conjugated PTPRO Monoclonal antibody



Catalog Number:CL594-67000

## Basic Information

Catalog Number:

CL594-67000

Size:

1000 µg/ml

Source:

Mouse

Isotype:

IgG2b

Immunogen Catalog Number:

AG8284

GenBank Accession Number:

BC035960

GeneID (NCBI):

5800

UNIPROT ID:

Q16827

Full Name:

protein tyrosine phosphatase,  
receptor type, O

Calculated MW:

138 kDa

Observed MW:

160 kDa, 180-220 kDa

Purification Method:

Protein A purification

CloneNo.:

2F2B4

Recommended Dilutions:

IF 1:50-1:500

Excitation/Emission maxima  
wavelengths:

588 nm / 604 nm

## Applications

Tested Applications:

IF-P

Species Specificity:

Human, Pig

Positive Controls:

IF : human kidney tissue,

## Background Information

PTPRO(receptor-type tyrosine-protein phosphatase O) is also named as GLEPP1, PTPU2 and belongs to the protein-tyrosine phosphatase family. The protein is a receptor-like membrane protein tyrosine phosphatase expressed at the apical membrane of the podocyte foot processes in the kidney(PMID:21722858). The 1,159-amino acid predicted mature protein contains a large extracellular domain, a single transmembrane domain, and a single intracellular PTPase domain. Defects in PTPRO are the cause of nephrotic syndrome type 6 (NPHS6). In reducing conditions, PTPRO can form a smear from 180 to 220 kDa; In non-reducing conditions, a band appears around 350 kDa, which likely represents the dimeric form of full-length PTPRO (PMID: 19573017).

## Storage

Storage:

Store at -20°C. Avoid exposure to light.

Storage Buffer:

PBS with 50% Glycerol, 0.05% Proclin300, 0.5% BSA, pH 7.3.

Aliquoting is unnecessary for -20°C storage

For technical support and original validation data for this product please contact:

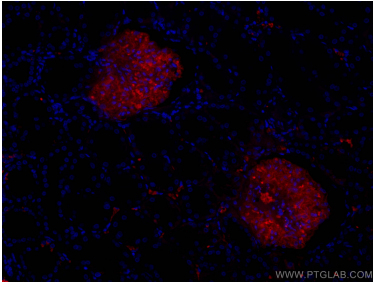
T: 4006900926

E: Proteintech-CN@ptglab.com

W: ptgcn.com

This product is exclusively available under Proteintech Group brand and is not available to purchase from any other manufacturer.

## Selected Validation Data



Immunofluorescent analysis of (4% PFA) fixed human kidney tissue using CoraLite® 594 PTPRO antibody (CL594-67000, Clone: 2F2B4) at dilution of 1:100.