

For Research Use Only

CoraLite®594-conjugated PRC1 Monoclonal antibody



Catalog Number:CL594-67027

Basic Information

Catalog Number:

CL594-67027

Size:

1000 µg/ml

Source:

Mouse

Isotype:

IgG1

Immunogen Catalog Number:

AG5907

GenBank Accession Number:

BC003138

GeneID (NCBI):

9055

UNIPROT ID:

O43663

Full Name:

protein regulator of cytokinesis 1

Calculated MW:

72 kDa

Observed MW:

66-72 kDa

Purification Method:

Protein G purification

CloneNo.:

1E1D5

Recommended Dilutions:

IF 1:50-1:500

Excitation/Emission maxima

wavelengths:

588 nm / 604 nm

Applications

Tested Applications:

IF/ICC

Species Specificity:

Human, mouse, rat

Positive Controls:

IF : HeLa cells,

Background Information

PRC1 (protein regulator of cytokinesis 1) is a microtubule-bundling protein that is involved in cytokinesis. Depletion of PRC1 leads to failed cytokinesis. PRC1 is located in the nucleus during interphase, and becomes associated with mitotic spindles in a highly dynamic manner during mitosis, and localizes to the cell mid-body during cytokinesis. PRC1 is a substrate of CDK1 and it was assumed that CDK1 phosphorylation blocks its activity during metaphase. Three isoforms of PRC1 exist due to the alternative splicing, with predictive molecular weight of 71.6 kDa, 70.2 kDa and 66.2 kDa, respectively. The dual bands between 66-72 kDa detected by this antibody may represent different forms of PRC1.

Storage

Storage:

Store at -20°C. Avoid exposure to light.

Storage Buffer:

PBS with 50% Glycerol, 0.05% Proclin300, 0.5% BSA, pH 7.3.

Aliquoting is unnecessary for -20°C storage

For technical support and original validation data for this product please contact:

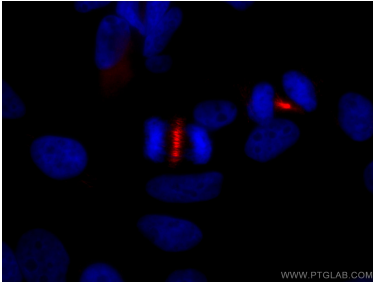
T: 4006900926

E: Proteintech-CN@ptglab.com

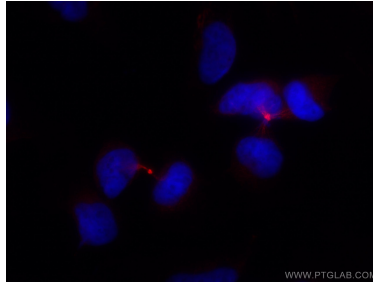
W: ptgcn.com

This product is exclusively available under Proteintech Group brand and is not available to purchase from any other manufacturer.

Selected Validation Data



Immunofluorescent analysis of (4% PFA) fixed HeLa cells using CoraLite@594 PRC1 antibody (CL594-67027, Clone: 1E1D5) at dilution of 1:100.



Immunofluorescent analysis of (4% PFA) fixed HeLa cells using CoraLite@594 PRC1 antibody (CL594-67027, Clone: 1E1D5) at dilution of 1:100.