

For Research Use Only

CoraLite®594-conjugated ATG7 Monoclonal antibody



Catalog Number:CL594-67341

Basic Information

Catalog Number: CL594-67341	GenBank Accession Number: BC000091	Purification Method: Protein A purification
Size: 1000 µg/ml	GeneID (NCBI): 10533	CloneNo.: 2B5A10
Source: Mouse	UNIPROT ID: O95352	Recommended Dilutions: IF 1:50-1:500
Isotype: IgG2a	Full Name: ATG7 autophagy related 7 homolog (S. cerevisiae)	Excitation/Emission maxima wavelengths: 588 nm / 604 nm
Immunogen Catalog Number: AG29172	Calculated MW: 78 kDa	
	Observed MW: 68-78 kDa	

Applications

Tested Applications: FC (Intra), IF/ICC	Positive Controls: IF : HepG2 cells,
Species Specificity: Human, Mouse, Rat, Pig	

Background Information

Atg7 is an E1-like enzyme that is specifically involved in autophagosome formation and is essential for autophagy. As an autophagic-related protein it is required for linking to Atg12, Atg5 and Atg8, which are essential for Atg conjugation and autophagosome formation. Atg7 has been reported as an important regulator of autophagy with starvation-induced or chemotherapeutic agent treatment. The high expression level of ATG7 is related to the survival of patients with breast cancer. There are several isoforms of ATG7 protein ranged from 68 kDa to 78 kDa.

Storage

Storage:
Store at -20°C. Avoid exposure to light.
Storage Buffer:
PBS with 50% Glycerol, 0.05% Proclin300, 0.5% BSA, pH 7.3.
Aliquoting is unnecessary for -20°C storage

For technical support and original validation data for this product please contact:

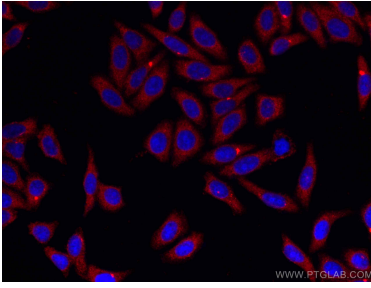
T: 4006900926

E: Proteintech-CN@ptglab.com

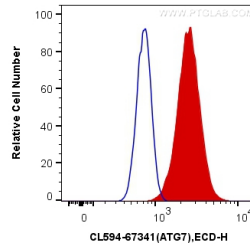
W: ptgcn.com

This product is exclusively available under Proteintech Group brand and is not available to purchase from any other manufacturer.

Selected Validation Data



Immunofluorescent analysis of (-20°C Methanol) fixed HepG2 cells using CoraLite®594 ATG7 antibody (CL594-67341, Clone: 2B5A10) at dilution of 1:200.



1X10⁶ Jurkat cells were intracellularly stained with 0.4 ug CoraLite®594 Anti-Human ATG7 (CL594-67341, Clone:2B5A10) (red), or 0.4 ug Mouse IgG2a Isotype Control (CL594-66360-2, Clone: K11A1B2A2) (blue). Cells were fixed with 4% PFA and permeabilized with Flow Cytometry Perm Buffer (PF00011-C).