

For Research Use Only

CoraLite® Plus 594-conjugated ZG16 Monoclonal antibody



Catalog Number:CL594-67389

Basic Information

Catalog Number:

CL594-67389

Size:

1000 µg/ml

Source:

Mouse

Isotype:

IgG1

Immunogen Catalog Number:

AG11332

GenBank Accession Number:

BC029149

GeneID (NCBI):

653808

UNIPROT ID:

O60844

Full Name:

zymogen granule protein 16 homolog
(rat)

Calculated MW:

167 aa, 18 kDa

Observed MW:

16 kDa

Purification Method:

Protein G purification

CloneNo.:

1A7B9

Recommended Dilutions:

IF 1:50-1:500

Excitation/Emission maxima

wavelengths:

594 nm / 615 nm

Applications

Tested Applications:

IF-P

Species Specificity:

Human, mouse, pig, rat

Positive Controls:

IF : mouse small intestine tissue,

Background Information

Zymogen granule protein 16 (ZG16) has a Jacalin-like lectin domain, which is mainly expressed by mucus-secreting cells, including goblet cells in the intestine. It's reported that ZG16 expression was significantly decreased in colorectal cancer compared to normal tissue. ZG16 gene expression and copy number variations (CNV) were associated with multiple molecular and clinicopathological features of CRC including MSI, MLH1 silencing and so on. It's found that ZG16 is negatively correlated with lymphatic invasive and distant metastasis. Besides, overexpression of ZG16 blocks PD-L1 expression in colorectal cancer, and promotes NK cells survival and proliferation. Very importantly, ZG16 suppresses colorectal tumor growth via the immune system. (PMID: 33360840, 21893569)

Storage

Storage:

Store at -20°C. Avoid exposure to light. Stable for one year after shipment.

Storage Buffer:

PBS with 50% Glycerol, 0.05% Proclin300, 0.5% BSA, pH 7.3.

Aliquoting is unnecessary for -20°C storage

For technical support and original validation data for this product please contact:

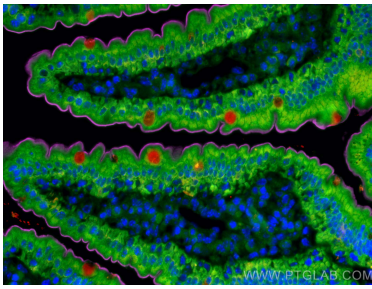
T: 4006900926

E: Proteintech-CN@ptglab.com

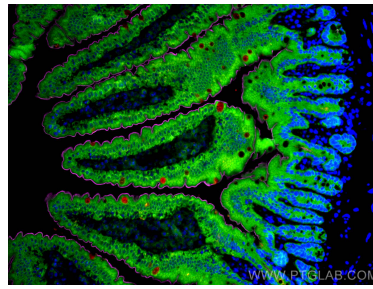
W: ptgcn.com

This product is exclusively available under Proteintech Group brand and is not available to purchase from any other manufacturer.

Selected Validation Data



Immunofluorescent analysis of (4% PFA) fixed mouse small intestine tissue using CoraLite® Plus 594 ZG16 antibody (CL594-67389, Clone: 1A7B9) at dilution of 1:100, CoraLite® Plus 488 PIGR antibody (CL488-22024, green), Villin antibody (16488-1-AP, Magenta).



Immunofluorescent analysis of (4% PFA) fixed mouse small intestine tissue using CoraLite® Plus 594 ZG16 antibody (CL594-67389, Clone: 1A7B9) at dilution of 1:100, CoraLite® Plus 488 PIGR antibody (CL488-22024, green), Villin antibody (16488-1-AP, Magenta).