

For Research Use Only

CoraLite®594-conjugated BSEP Monoclonal antibody



Catalog Number:CL594-67512

Basic Information

Catalog Number:

CL594-67512

Size:

1000 µg/ml

Source:

Mouse

Isotype:

IgG1

Immunogen Catalog Number:

AG29135

GenBank Accession Number:

NM_003742

GeneID (NCBI):

8647

UNIPROT ID:

O95342

Full Name:

ATP-binding cassette, sub-family B (MDR/TAP), member 11

Calculated MW:

146 kDa

Observed MW:

150-160 kDa

Purification Method:

Protein G purification

CloneNo.:

3C11D5

Recommended Dilutions:

IF 1:500-1:2000

Excitation/Emission maxima wavelengths:

588 nm / 604 nm

Applications

Tested Applications:

FC (Intra), IF-P

Species Specificity:

Human, mouse

Positive Controls:

IF : mouse liver tissue,

Background Information

ABCB11, also named as BSEP, belongs to the ABC transporter superfamily. ABCB11 involved in the ATP-dependent secretion of bile salts into the canaliculus of hepatocytes. Mutation of ABCB11 will cause the progressive familial intrahepatic cholestasis type 2 (PFIC2) and the benign recurrent intrahepatic cholestasis type 2 (BRIC2). Genetic variations in ABCB11 may play a role in drug-induced cholestasis causing liver damage.

Storage

Storage:

Store at -20°C. Avoid exposure to light. Stable for one year after shipment.

Storage Buffer:

PBS with 50% Glycerol, 0.05% Proclin300, 0.5% BSA, pH 7.3.

Aliquoting is unnecessary for -20°C storage

For technical support and original validation data for this product please contact:

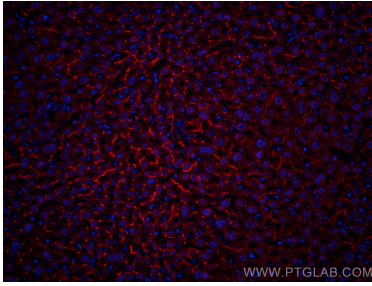
T: 4006900926

E: Proteintech-CN@ptglab.com

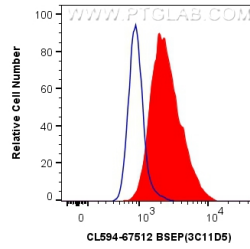
W: ptgcn.com

This product is exclusively available under Proteintech Group brand and is not available to purchase from any other manufacturer.

Selected Validation Data



Immunofluorescent analysis of (4% PFA) fixed mouse liver tissue using CoraLite®594 BSEP antibody (CL594-67512, Clone: 3C11D5) at dilution of 1:1000.



1X10⁶ HeLa cells were intracellularly stained with 0.8 ug CoraLite®594 Anti-Human BSEP (CL594-67512, Clone:3C11D5) (red), or 0.8 ug CoraLite®594 Mouse IgG1 Isotype Control (MOPC-21) (CL594-65124, Clone: MOPC-21) (blue). Cells were fixed with 4% PFA and permeabilized with Flow Cytometry Perm Buffer (PF00011-C).