

For Research Use Only

CoraLite®594-conjugated Ch-TOG Monoclonal antibody



Catalog Number:CL594-67631

Basic Information

Catalog Number: CL594-67631	GenBank Accession Number: BC120869	Purification Method: Protein G purification
Size: 1000 µg/ml	GeneID (NCBI): 9793	CloneNo.: 1H5G1
Source: Mouse	UNIPROT ID: Q14008	Recommended Dilutions: IF 1:50-1:500
Isotype: IgG1	Full Name: cytoskeleton associated protein 5	Excitation/Emission maxima wavelengths: 588 nm / 604 nm
Immunogen Catalog Number: AG28770	Observed MW: 220-240 kDa	

Applications

Tested Applications: IF/ICC	Positive Controls: IF : HepG2 cells,
Species Specificity: Human, mouse, rat, pig	

Background Information

Ch-TOG (colonic hepatic tumor-overexpressed gene), also known as XMAP215 or CKAP5, is a microtubule polymerase which can promote cytoplasmic microtubule nucleation and elongation. Through interacting with Aurora-A and TACC3, it plays a major role in organizing spindle poles.

Storage

Storage:
Store at -20°C. Avoid exposure to light. Stable for one year after shipment.
Storage Buffer:
PBS with 50% Glycerol, 0.05% Proclin300, 0.5% BSA, pH 7.3.
Aliquoting is unnecessary for -20°C storage

For technical support and original validation data for this product please contact:

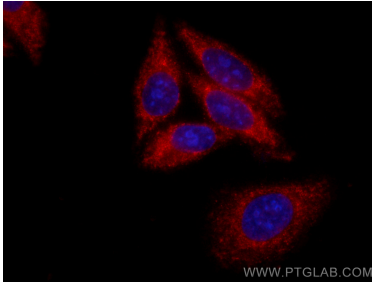
T: 4006900926

E: Proteintech-CN@ptglab.com

W: ptgcn.com

This product is exclusively available under Proteintech Group brand and is not available to purchase from any other manufacturer.

Selected Validation Data



Immunofluorescent analysis of (-20°C Methanol) fixed HepG2 cells using CoraLite®594 Ch-TOG antibody (CL594-67631, Clone: 1H5G1) at dilution of 1:200.