

For Research Use Only



# CoraLite® Plus 647-conjugated GABARAPL1-Specific Polyclonal antibody

Catalog Number: **CL647-11010**

Featured Product

## Basic Information

Catalog Number:  
CL647-11010

Size:  
1000 µg/ml

Source:  
Rabbit

Isotype:  
IgG

Immunogen Catalog Number:  
AG1473

GenBank Accession Number:  
BC009309

GeneID (NCBI):  
23710

UNIPROT ID:  
Q9HOR8

Full Name:  
GABA(A) receptor-associated protein  
like 1

Calculated MW:  
14 kDa

Observed MW:  
16 kDa

Purification Method:  
Antigen affinity purification

Excitation/Emission maxima  
wavelengths:  
654 nm / 674 nm

## Applications

Tested Applications:  
FC (Intra)

Species Specificity:  
human, mouse, rat

## Background Information

GABARAPL1 (GABARAP-like protein 1), also named as ATG8, GEC1, APG8L, ATG8L and APG8-LIKE, is a member of GABARP (GABAA receptor-associated protein) family. GABARAPL1 was initially identified as estrogen-regulated gene and the protein acts in receptor and vesicle transport. It's also involved in the process of autophagy like GABARAP and GABARAPL2, and may be considered as an autophagic marker. It is expressed at very high levels in the brain, heart, peripheral blood leukocytes, liver, kidney, placenta and skeletal muscle and at very low levels in thymus and small intestine. The antibody is specific to GABARAPL1, and it doesn't recognize the recombinant GABARAP and GABARAPL2.

## Storage

Storage:

Store at -20°C. Avoid exposure to light. Stable for one year after shipment.

Storage Buffer:

PBS with 50% Glycerol, 0.05% Proclin300, 0.5% BSA, pH 7.3.

Aliquoting is unnecessary for -20°C storage

For technical support and original validation data for this product please contact:

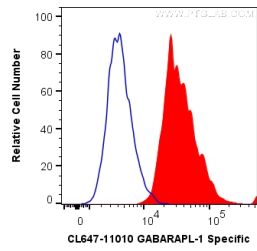
T: 4006900926

E: [Proteintech-CN@ptglab.com](mailto:Proteintech-CN@ptglab.com)

W: [ptgcn.com](http://ptgcn.com)

This product is exclusively available under Proteintech Group brand and is not available to purchase from any other manufacturer.

## Selected Validation Data



1X10<sup>6</sup> HepG2 cells were intracellularly stained with 0.2 ug CoraLite® Plus 647 Anti-Human GABARAPL1-Specific (CL647-11010) (red), or 0.2 ug Isotype Control (blue). Cells were fixed with 4% PFA and permeabilized with Flow Cytometry Perm Buffer (PF00011-C).