

CoraLite® Plus 647 Anti-Human CD3 (Hit3a)

Catalog Number: **CL647-65112**

Basic Information

Catalog Number:

CL647-65112

Size:

100tests, 5 µl/test

Source:

Mouse

Isotype:

IgG2a, kappa

GenBank Accession Number:

BC049847

GeneID (NCBI):

916

ENSEMBL Gene ID:

ENSG00000198851

UNIPROT ID:

P07766

Full Name:

CD3e molecule, epsilon (CD3-TCR complex)

Calculated MW:

207 aa, 23 kDa

Purification Method:

Affinity purification

CloneNo.:

Hit3a

Excitation/Emission maxima wavelengths:

654 nm / 674 nm

Applications

Tested Applications:

FC

Species Specificity:

Human

Background Information

CD3 is a multimeric protein associated with the T-cell receptor (TCR) to form a complex involved in antigen recognition and signal transduction (PMID: 15885124). CD3 is composed of CD3 γ , δ , ϵ , and ζ chains (PMID: 1826255). It is expressed by thymocytes in a developmentally regulated manner, T cells, and some NK cells (PMID: 3289580). The TCR recognizes antigens bound to major histocompatibility complex (MHC) molecules. TCR-mediated peptide-MHC recognition is transmitted to the CD3 complex, leading to the intracellular signal transduction (PMID: 11985657).

Storage

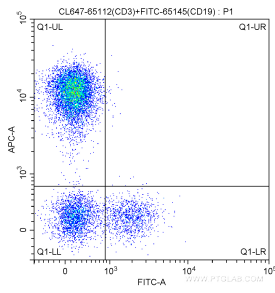
Storage:

Store at 2-8°C. Avoid exposure to light. Stable for one year after shipment.

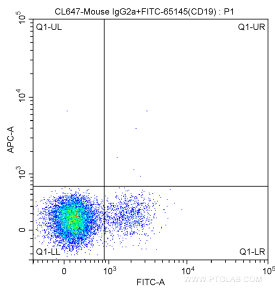
Storage Buffer:

PBS with 0.1% sodium azide and 0.5% BSA, pH 7.3.

Selected Validation Data



1X10⁶ human peripheral blood lymphocytes were surface stained with FITC-Anti-Human CD19 (FITC-65145, Clone: SJ25C1) and 5.00 ul CoraLite® Plus 647-conjugated Anti-Human CD3 (CL647-65112, Clone: Hit3a). Cells were not fixed.



1X10⁶ human peripheral blood lymphocytes were surface stained with FITC-Anti-Human CD19 (FITC-65145, Clone: SJ25C1) and CoraLite® Plus 647-conjugated Mouse IgG2a isotype control antibody. Cells were not fixed.