

For Research Use Only

# CoraLite® Plus 647 Anti-Human CD8 (UCHT4)



Catalog Number: CL647-65204

## Basic Information

Catalog Number:

CL647-65204

Size:

100 tests, 5 µl/test

Source:

Mouse

Isotype:

IgG2a

GenBank Accession Number:

BC025715

GeneID (NCBI):

925

ENSEMBL Gene ID:

ENSG00000153563

UNIPROT ID:

P01732

Full Name:

CD8a molecule

Calculated MW:

235 aa, 26 kDa

Purification Method:

Protein A purification

CloneNo.:

UCHT4

Excitation/Emission maxima

wavelengths:

654 nm / 674 nm

## Applications

Tested Applications:

FC

Species Specificity:

Human

## Background Information

CD8 is a transmembrane glycoprotein composed of two disulfide-linked chains. It can be present as a homodimer of CD8 $\alpha$  or as a heterodimer of CD8 $\alpha$  and CD8 $\beta$  (PMID: 3264320; 8253791). CD8 is found on most thymocytes. The majority of class I-restricted T cells express mostly the CD8 $\alpha$  $\beta$  heterodimer while CD8 $\alpha$  $\alpha$  homodimers alone have been found on some gut intraepithelial T cells, on some T cell receptor (TCR)  $\gamma$  $\delta$  T cells and on NK cells (PMID: 2111591; 1831127; 8420975). CD8 acts as a co-receptor that binds to MHC class-I and participates in cytotoxic T cell activation (PMID: 8499079). During T cell development, CD8 is required for positive selection of CD4-/CD8+ T cells (PMID: 1968084).

## Storage

Storage:

Store at 2-8°C. Avoid exposure to light. Stable for one year after shipment.

Storage Buffer:

PBS with 0.1% sodium azide and 0.5% BSA, pH 7.3.

For technical support and original validation data for this product please contact:

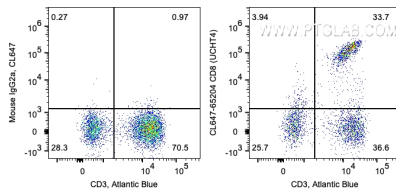
T: 4006900926

E: Proteintech-CN@ptglab.com

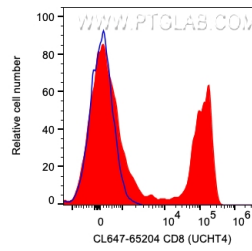
W: ptgcn.com

This product is exclusively available under Proteintech Group brand and is not available to purchase from any other manufacturer.

## Selected Validation Data



1X10<sup>6</sup> human PBMCs were surface co-stained with PacificBlue Anti-Human CD3 and 5 ul CoraLite® Plus 647 Anti-Human CD8 (CL647-65204, Clone: UCHT4), or Mouse IgG2a Isotype Control. Cells were not fixed. Lymphocytes were gated.



1X10<sup>6</sup> human PBMCs were surface stained with 5 ul CoraLite® Plus 647 Anti-Human CD8 (CL647-65204, Clone: UCHT4), or Mouse IgG2a Isotype Control. Cells were not fixed. Lymphocytes were gated.