

For Research Use Only

CoraLite® Plus 647-conjugated Glutamine Synthetase Monoclonal antibody



Catalog Number: **CL647-66323-2**

Featured Product

Basic Information

Catalog Number:
CL647-66323-2

Size:
1000 µg/ml

Source:
Mouse

Isotype:
IgG1

Immunogen Catalog Number:
AG6309

GenBank Accession Number:
BC011700

GeneID (NCBI):
2752

UNIPROT ID:
P15104

Full Name:
glutamate-ammonia ligase
(glutamine synthetase)

Calculated MW:
374 aa, 42 kDa

Observed MW:
42 kDa

Purification Method:
Protein G purification

CloneNo.:
1B6G4

Recommended Dilutions:
IF 1:50-1:500

Excitation/Emission maxima
wavelengths:
654 nm / 674 nm

Applications

Tested Applications:

IF

Species Specificity:

Human, mouse, rat

Positive Controls:

IF : mouse brain tissue,

Background Information

Storage

Storage:

Store at -20°C. Avoid exposure to light. Stable for one year after shipment.

Storage Buffer:

PBS with 50% Glycerol, 0.05% Proclin300, 0.5% BSA, pH 7.3.

Aliquoting is unnecessary for -20°C storage

For technical support and original validation data for this product please contact:

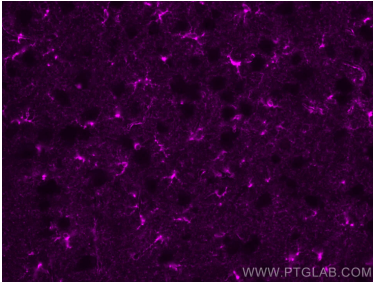
T: 4006900926

E: Proteintech-CN@ptglab.com

W: ptgcn.com

This product is exclusively available under Proteintech Group brand and is not available to purchase from any other manufacturer.

Selected Validation Data



Immunofluorescent analysis of (4% PFA) fixed mouse brain tissue using CoraLite® Plus 647 Glutamine Synthetase antibody (CL647-66323-2, Clone: 1B6G4) at dilution of 1:200.