

For Research Use Only

# CoraLite® Plus 647-conjugated Glutamine Synthetase Monoclonal antibody



Catalog Number: **CL647-66323**

Featured Product

## Basic Information

Catalog Number:  
CL647-66323

Size:  
1000 µg/ml

Source:  
Mouse

Isotype:  
IgG1

Immunogen Catalog Number:  
AG6309

GenBank Accession Number:  
BC011700

GeneID (NCBI):  
2752

UNIPROT ID:  
P15104

Full Name:  
glutamate-ammonia ligase  
(glutamine synthetase)

Calculated MW:  
374 aa, 42 kDa

Observed MW:  
42 kDa

Purification Method:  
Protein G purification

CloneNo.:  
1B6G4

Recommended Dilutions:  
IF 1:50-1:500

Excitation/Emission maxima  
wavelengths:  
654 nm / 674 nm

## Applications

Tested Applications:  
IF-P

Species Specificity:  
Human, mouse, rat

Positive Controls:

IF : mouse brain tissue,

## Background Information

### Storage

Storage:

Store at -20°C. Avoid exposure to light. Stable for one year after shipment.

Storage Buffer:

PBS with 50% Glycerol, 0.05% Proclin300, 0.5% BSA, pH 7.3.

Aliquoting is unnecessary for -20°C storage

For technical support and original validation data for this product please contact:

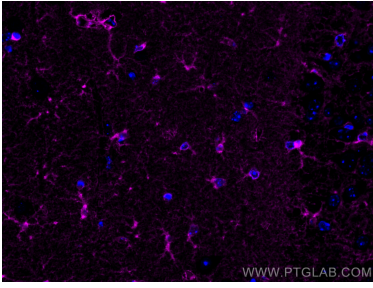
T: 4006900926

E: [Proteintech-CN@ptglab.com](mailto:Proteintech-CN@ptglab.com)

W: [ptgcn.com](http://ptgcn.com)

This product is exclusively available under Proteintech Group brand and is not available to purchase from any other manufacturer.

## Selected Validation Data



Immunofluorescent analysis of (4% PFA) fixed mouse brain tissue using CoraLite® Plus 647 Glutamine Synthetase antibody (CL647-66323, Clone: 1B6G4 ) at dilution of 1:200.