

For Research Use Only

# CoraLite® Plus 647-conjugated Phospho-STAT5A (Tyr694) Recombinant antibody



Catalog Number: **CL647-80115**

## Basic Information

<b>Catalog Number:</b> CL647-80115	<b>GenBank Accession Number:</b> BC027036	<b>Purification Method:</b> Protein A purification
<b>Size:</b> 1000 µg/ml	<b>GeneID (NCBI):</b> 6776	<b>CloneNo.:</b> 2P21
<b>Source:</b> Rabbit	<b>UNIPROT ID:</b> P42229	<b>Excitation/Emission maxima wavelengths:</b> 654 nm / 674 nm
<b>Isotype:</b> IgG	<b>Full Name:</b> signal transducer and activator of transcription 5A	
	<b>Calculated MW:</b> 794 aa, 92 kDa	
	<b>Observed MW:</b> 90-95 kDa	

## Applications

**Tested Applications:**  
FC (Intra)

**Species Specificity:**  
Human

## Background Information

STAT5A, also named as STAT5, belongs to the transcription factor STAT family. In response to cytokines and growth factors, STAT family members are phosphorylated by the receptor associated kinases, and then form homo- or heterodimers that translocate to the cell nucleus where they act as transcription activators. STAT5A is activated by, and mediates the responses of many cell ligands, such as IL2, IL3, IL7 GM-CSF, erythropoietin, thrombopoietin, and different GHs. Phosphorylation at Tyr694 is obligatory for Stat5 activation. Activation of STAT5A in myeloma and lymphoma associated with a TEL/JAK2 gene fusion is independent of cell stimulus and has been shown to be essential for the tumorigenesis. The mouse counterpart of human STAT5A is found to induce the expression of BCL2L1/BCL-X(L), which suggests the antiapoptotic function of STAT5A in cells.

## Storage

**Storage:**  
Store at -20°C. Avoid exposure to light. Stable for one year after shipment.

**Storage Buffer:**  
PBS with 50% Glycerol, 0.05% Proclin300, 0.5% BSA, pH 7.3.

Aliquoting is unnecessary for -20°C storage

For technical support and original validation data for this product please contact:

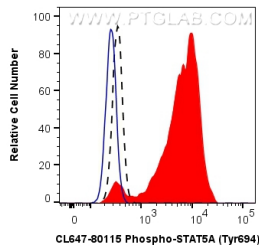
T: 4006900926

E: [Proteintech-CN@ptglab.com](mailto:Proteintech-CN@ptglab.com)

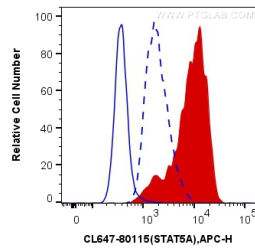
W: [ptgcn.com](http://ptgcn.com)

**This product is exclusively available under Proteintech Group brand and is not available to purchase from any other manufacturer.**

## Selected Validation Data



1X10<sup>6</sup> TF-1 cells untreated (dashed lines) or treated with GM-CSF (red) were intracellularly stained with 0.06 ug CoraLite® Plus 647 Anti-Human Phospho-STAT5A (Tyr694) (CL647-80115, Clone:2P21), or 0.06 ug Control Antibody (blue, solid line). Cells were fixed with 4% PFA and permeabilized with 90% MeOH.



1X10<sup>6</sup> TF-1 cells untreated (dashed line, low) or treated with GM-CSF (100 ng/mL at 37°C for 30 minutes after serum- starvation overnight, red, positive) were intracellularly stained with 0.13 ug CoraLite® Plus 647 Anti-Human Phospho-STAT5A (Tyr694) (CL647-80115, Clone:2P21) (red), or 0.13 ug Control Antibody (blue, solid line). Cells were fixed with 4% PFA and permeabilized with 90% MeOH.