

For Research Use Only

CoraLite® Plus 750 Mouse IgG1 Isotype Control (MOPC-21)



Catalog Number: CL750-65124

Basic Information

Catalog Number: CL750-65124	GenBank Accession Number: GeneID (NCBI): 16017	Purification Method: Affinity purification
Size: 100ug, 0.2 mg/ml	UNIPROT ID: P01868	CloneNo.: MOPC-21
Source: Mouse	Full Name: immunoglobulin heavy constant gamma 1 (G1m marker)	Excitation/Emission maxima wavelengths: 755 nm / 780 nm
Isotype: IgG1		

Applications

Tested Applications:
FC
Species Specificity:

Background Information

The MOPC-21 immunoglobulin is useful as an isotype-matched control. The MOPC-21 immunoglobulin has an unknown binding specificity and is used as an isotype control for mouse IgG1 antibodies. This antibody has been quality-tested for flow cytometry as negative control.

Storage

Storage:
Store at 2-8°C. Avoid exposure to light. Stable for one year after shipment.
Storage Buffer:
PBS with 0.09% sodium azide.

For technical support and original validation data for this product please contact:

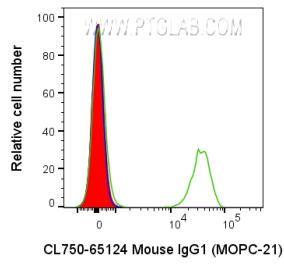
T: 4006900926

E: Proteintech-CN@ptglab.com

W: ptgcn.com

This product is exclusively available under Proteintech Group brand and is not available to purchase from any other manufacturer.

Selected Validation Data



1X10⁶ human PBMCs were surface stained with 0.2 ug CoraLite® Plus 750 Anti-Mouse IgG1 Isotype Control (CL750-65124, Clone:MOPC-21) (red), unstained (blue), or CL750 Anti-Human CD3 (UCHT1) (green). Cells were not fixed. Lymphocytes were gated.