

For Research Use Only

# FITC Anti-Mouse CD103 (2E7)

Catalog Number: FITC-65047



## Basic Information

Catalog Number:

FITC-65047

Size:

500ug, 0.5 mg/ml

Source:

Hamster

Isotype:

IgG

GenBank Accession Number:

BC150690

GeneID (NCBI):

16407

UNIPROT ID:

Q60677

Full Name:

integrin alpha E, epithelial-associated

Purification Method:

Affinity purification

CloneNo.:

2E7

Excitation/Emission maxima wavelengths:

494 nm / 520 nm

## Applications

Tested Applications:

FC

Species Specificity:

Mouse

## Background Information

CD103, also known as integrin alpha-E (ITGAE) or integrin alpha-IEL, is a type I transmembrane integrin protein that binds integrin beta 7 to form Integrin alpha-E beta-7 which is a receptor for E-cadherin and mediates adhesion of T lymphocytes to epithelial cells (PMID: 7969453; 8468482). CD103 is expressed on intraepithelial lymphocyte (IEL) T cells (both alpha/beta T cells and gamma/delta T cells), some peripheral regulatory T cells (Tregs), lamina propria T cells, and a subset of dendritic cells in the gut mucosa and mesenteric lymph nodes (PMID: 12242333; 15608520; 16216890).

## Storage

Storage:

Store at 2-8°C. Avoid exposure to light.

Storage Buffer:

PBS with 0.1% sodium azide.

For technical support and original validation data for this product please contact:

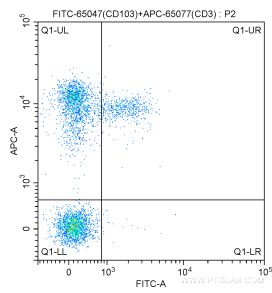
T: 4006900926

E: [Proteintech-CN@ptglab.com](mailto:Proteintech-CN@ptglab.com)

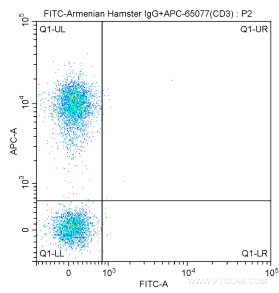
W: [ptgcn.com](http://ptgcn.com)

This product is exclusively available under Proteintech Group brand and is not available to purchase from any other manufacturer.

## Selected Validation Data



1X10<sup>6</sup> C57BL/6 mouse splenocytes were surface stained with APC-Anti-Mouse CD3 (APC-65077, Clone: 17A2) and 1.00 ug FITC Anti-Mouse CD103 (FITC-65047, Clone: 2E7). Cells were not fixed.



1X10<sup>6</sup> C57BL/6 mouse splenocytes were surface stained with APC-Anti-Mouse CD3 (APC-65077, Clone: 17A2) and 1.00 ug FITC-Armenian Hamster IgG isotype control antibody. Cells were not fixed.