

For Research Use Only

FITC Plus Anti-Mouse CD11b (M1/70)



Catalog Number: FITC-65055

8 Publications

Basic Information

Catalog Number:

FITC-65055

Size:

100ug, 0.5 mg/ml

Source:

Rat

Isotype:

IgG2b, kappa

GenBank Accession Number:

BC156991

GeneID (NCBI):

16409

Full Name:

integrin alpha M

Purification Method:

Affinity purification

CloneNo.:

M1/70

Excitation/Emission maxima wavelengths:

495 nm / 524 nm

Applications

Tested Applications:

FC

Cited Applications:

FC, IF

Species Specificity:

Mouse, Human

Cited Species:

mouse

Background Information

Integrins are cell adhesion receptors that are heterodimers composed of non-covalently associated α and β subunits (PMID: 9779984). CD11b, also known as Integrin alpha M or CR3A, belongs to the integrin alpha chain family. CD11b forms an α / β heterodimer with CD18 (integrin β 2). CD11b/CD18 is implicated in various adhesive interactions of monocytes, macrophages and granulocytes as well as in mediating the uptake of complement-coated particles and pathogens (PMID: 9558116; 20008295). CD11b/CD18 is a receptor for the complement protein fragment iC3b, and is also a receptor for fibrinogen, factor X and ICAM1 (PMID: 2971974; 15485828).

Notable Publications

Author	Pubmed ID	Journal	Application
Jiaotai Shi	36364344	Molecules	IF
Na Qu	35738090	Int Immunopharmacol	IF,FC
Hanyue Chang	34290225	Cell Death Dis	FC

Storage

Storage:

Store at 2-8°C. Avoid exposure to light. Stable for one year after shipment.

Storage Buffer:

PBS with 0.09% sodium azide.

For technical support and original validation data for this product please contact:

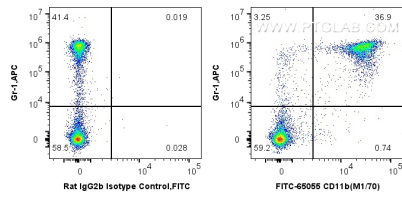
T: 4006900926

E: Proteintech-CN@ptglab.com

W: ptgcn.com

This product is exclusively available under Proteintech Group brand and is not available to purchase from any other manufacturer.

Selected Validation Data



1X10⁶ Balb/c mouse bone marrow cells were surface co-stained with 0.25 ug APC Anti-Mouse Ly-6G/Ly-6C (Gr-1) (RB6-8C5) and 0.25 ug FITC Plus Anti-Mouse CD11b (FITC-65055, Clone: M1/70) or 0.25 ug FITC Plus Rat IgG2b Isotype Control (LTF-2). Cells were not fixed.