

For Research Use Only

# FITC Plus Anti-Human CD146 (P1H12)



Catalog Number: **FITC-65181**

## Basic Information

<b>Catalog Number:</b> FITC-65181	<b>GenBank Accession Number:</b> BC056418	<b>Purification Method:</b> Affinity purification
<b>Size:</b> 100tests, 5 ul/test	<b>GeneID (NCBI):</b> 4162	<b>CloneNo.:</b> P1H12
<b>Source:</b> Mouse	<b>UNIPROT ID:</b> P43121	<b>Excitation/Emission maxima wavelengths:</b> 495 nm / 524 nm
<b>Isotype:</b> IgG1, kappa	<b>Full Name:</b> melanoma cell adhesion molecule	
	<b>Calculated MW:</b> 646 aa, 72 kDa	

## Applications

**Tested Applications:**  
FC

**Species Specificity:**  
Rabbit, Canine, Mouse, Human

## Background Information

CD146, also known as melanoma cell adhesion molecule (MCAM) or MUC18, originally identified as a biomarker of melanoma progression, is a transmembrane glycoprotein of 113-130 kDa, belonging to the immunoglobulin (Ig) superfamily (PMID: 8378324; 25993332). Structurally, it consists of five Ig domains, a transmembrane domain, and a cytoplasmic region. In normal adult tissue, CD146 is primarily expressed by vascular endothelium and smooth muscle. CD146 is a key cell adhesion protein in vascular endothelial cell activity and angiogenesis, and has been used as marker of circulating endothelium cells (CECs) (PMID: 19356677). In addition to the membrane-anchored form of CD146, a soluble form of CD146 (sCD146, 105 kDa) has also been found in human plasma and in the supernatant of cultured human endothelial cells (PMID: 9462829; 19229070; 16374253; 14597988).

## Storage

**Storage:**  
Store at 2-8°C. Avoid exposure to light. Stable for one year after shipment.

**Storage Buffer:**  
PBS with 0.09% sodium azide and 0.5% BSA.

For technical support and original validation data for this product please contact:

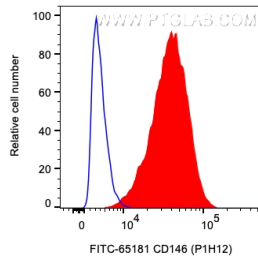
T: 4006900926

E: [Proteintech-CN@ptglab.com](mailto:Proteintech-CN@ptglab.com)

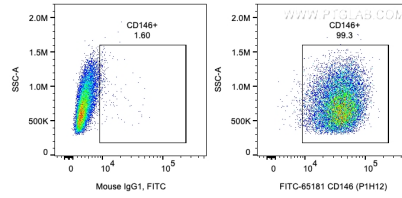
W: [ptgcn.com](http://ptgcn.com)

**This product is exclusively available under Proteintech Group brand and is not available to purchase from any other manufacturer.**

## Selected Validation Data



$1 \times 10^6$  A375 cells were surface stained with 5  $\mu$ l FITC Plus Anti-Human CD146 (FITC-65181, Clone: P1H12) (red) or Mouse IgG1 Isotype Control. Cells were not fixed.



$1 \times 10^6$  A375 cells were surface stained with 5  $\mu$ l FITC Plus Anti-Human CD146 (FITC-65181, Clone: P1H12) or Mouse IgG1 Isotype Control. Cells were not fixed.