

HumanKine[®] SCF (Recombinant Human)



Animal Component-Free

Human cell expressed

Tag-Free

Endotoxin Free

Product Description

Animal-free Recombinant Human SCF is expressed in human 293 cells as a monomeric glycoprotein with an apparent molecular mass of 35 to 45 kDa. This product is produced in a human cell expression system with serum-free, chemically defined media. Production in human 293 cells offers authentic glycosylation, contributing to stability in cell growth media and other applications. SCF is a hematopoietic growth factor that exerts its activity by signaling through the c-Kit receptor. SCF and c-Kit are essential for the survival, proliferation, and differentiation of hematopoietic cells committed to the melanocyte and germ cell lineages.

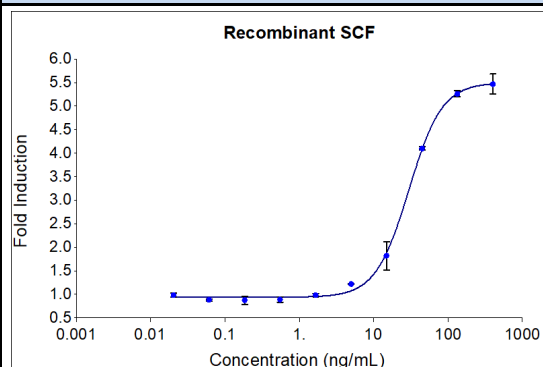
Alternative Names c Kit ligand, DKFZp686F2250, KIT ligand, Kitl, KITLG, KL 1, Mast cell growth factor, MGF, SCF, SF, SHEP7, Stem cell factor

Source Human Embryonic Kidney cells (HEK293). HEK293-derived SCF protein

Specifications

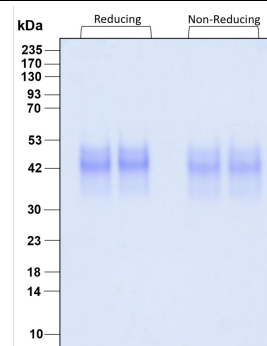
Test	Method	Specification
Activity	Dose-dependent stimulation of the proliferation of human MO7e cells (human megakaryoblastic leukemia cell line)	15-85 ng/mL EC50
Molecular Mass	SDS-PAGE	30 to 45 kDa, monomer, glycosylated
Purity	SDS-PAGE	>95%
Endotoxin	LAL	<1 EU/μg

Activity Data



Recombinant human SCF (HZ-1024) stimulates dose-dependent proliferation of the MO7e human megakaryoblastic leukemia cell line. Cell number was quantitatively assessed by PrestoBlue[®] Cell Viability Reagent. MO7e cells were treated with increasing concentrations of GMP recombinant SCF for 72 hours. The EC50 was determined using a 4-parameter non-linear

SDS-PAGE



Preparation	
Shipping Temperature	ambient temperature
Formulation	1x PBS, See Certificate of Analysis for details
Reconstitution	Briefly centrifuge the vial before opening. It is recommended to reconstitute the protein in sterile 1xPBS pH 7.4 containing 0.1% endotoxin-free recombinant human serum albumin (HSA).

Stability and Storage	Product Form	Temperature Conditions	Storage Time (From Date of Receipt)
	Lyophilized	-20°C to -80°C	Until Expiry Date
	Lyophilized	Room Temperature	2 weeks
	Reconstituted as per CofA	-20°C to -80°C	6 months
	Reconstituted as per CofA	4°C	1 week
Avoid repeated freeze-thaw cycles.			

www.ptglab.com

Document #: FR-QA118-101 Rev 0
Data Sheet Version #: 1

Proteintech Group, Inc.
5500 Pearl Street, Suite 400 Rosemont, IL 60612
t: 1-888-478-4522; f: 1-312-455-8408
Email: proteintech@ptglab.com