

HumanKine[®] beta NGF (Recombinant Human)



Animal Component-Free

Human cell expressed

Tag-Free

Endotoxin Free

Product Description

Animal-free Recombinant Human beta NGF is expressed in human 293 cells as a non-disulfide bonded homodimeric protein with an apparent molecular mass of 13 kDa. Beta NGF is critical for the survival and maintenance of sympathetic and sensory neurons and may play an important role in the regulation of the immune system. The presence of beta NGF in immune cells and endocrine cells as well as in the CNS limbic areas suggests that beta NGF may function as an intracellular messenger to regulate the body's response to stress. This product is produced in a human cell expression system with serum-free, chemically defined media.

Alternative Names

Beta nerve growth factor, Beta NGF, HSAN5, NGF, NGFB, proNGF

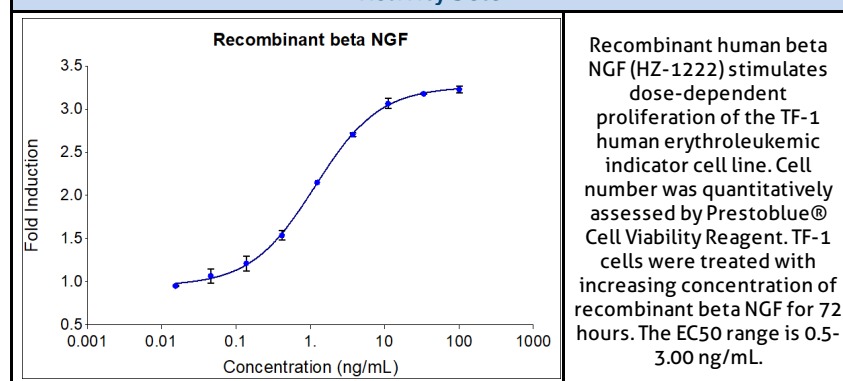
Source

Human Embryonic Kidney cells (HEK293). HEK293-derived beta NGF protein

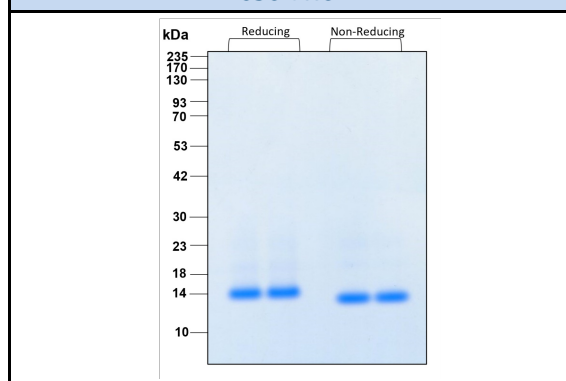
Specifications

| Test | Method | Specification |
|----------------|---|--|
| Activity | Dose-dependent stimulation of the proliferation of human TF-1 cells (human erythroleukemic indicator cell line) | 0.5-3.0 ng/mL EC50 |
| Molecular Mass | SDS-PAGE | 13 kDa reduced, 14 kDa non-reduced, non-disulfide bonded homodimer, non-glycosylated |
| Purity | SDS-PAGE | >95% |
| Endotoxin | LAL | <1 EU/ μ g |

Activity Data



SDS-PAGE



| Preparation | |
|----------------------|---|
| Shipping Temperature | ambient temperature |
| Formulation | 1x PBS, See Certificate of Analysis for details |
| Reconstitution | Briefly centrifuge the vial before opening. It is recommended to reconstitute the protein in sterile 1xPBS pH 7.4 containing 0.1% endotoxin-free recombinant human serum albumin (HSA). |

| Stability and Storage | Product Form | Temperature Conditions | Storage Time (From Date of Receipt) |
|------------------------------------|---------------------------|------------------------|--|
| | Lyophilized | -20°C to -80°C | Until Expiry Date |
| | Lyophilized | Room Temperature | 2 weeks |
| | Reconstituted as per CofA | -20°C to -80°C | 6 months |
| | Reconstituted as per CofA | 4°C | 1 week |
| Avoid repeated freeze-thaw cycles. | | | |

www.ptglab.com

Document #: FR-QA118-101 Rev 0
Data Sheet Version #: 1

Proteintech Group, Inc.
5500 Pearl Street, Suite 400 Rosemont, IL 60612
t: 1-888-478-4522; f: 1-312-455-8408
Email: proteintech@ptglab.com