

IHC*easy* FKBP5 Ready-To-Use IHC Kit

Catalog Number: **KHC0418**

General Information

Sample type:
FFPE tissue
Cited sample type:
Reactivity:
Human, Rat
Cited Reactivity:

Assay type:
Immunohistochemistry
Primary antibody type:
Mouse Monoclonal
Secondary antibody type:
Polymer-HRP-Goat anti-Mouse

Kit Component

| Component | Size | Concentration |
|--------------------------|--------------------|---------------|
| Antigen Retrieval Buffer | 100 mL | 50× |
| Washing Buffer | 100 mL ×2 | 20× |
| Blocking Buffer | 5 mL | RTU |
| Primary Antibody | 5 mL | RTU |
| Secondary Antibody | 5 mL | RTU |
| Chromogen Component A | 0.2 mL | RTU |
| Chromogen Component B | 4 mL | RTU |
| Signal Enhancer | 5 mL | RTU |
| Counter Staining Reagent | 5 mL | RTU |
| Mounting Media | 5 mL | RTU |
| Control Slide | 1 slide (Optional) | FFPE |
| Datasheet | 1 Copy | |
| Manual | 1 Copy | |

Storage Instructions

All the reagents are stored at 2-8°C. The kit is stable for 6 months from the date of receipt.

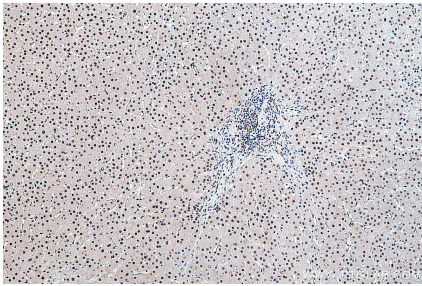
Background

FKBP5 (Peptidyl-prolyl cis-trans isomerase FKBP5) interacts with functionally mature heterooligomeric progesterone receptor complexes along with HSP90 and TEBP. Unlike the predominant T-cell expression of the mouse protein, FKBP5 is expressed in a variety of tissues.

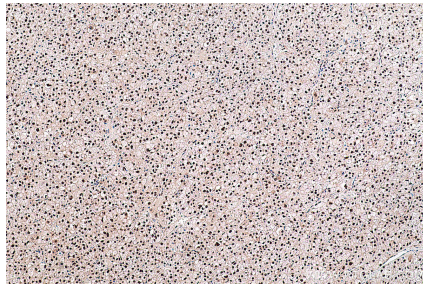
Synonyms

51 kDa FK506 binding protein, 51 kDa FKBP, AIG6, Androgen regulated protein 6, FF1 antigen, FK506 binding protein 5, FKBP 5, FKBP 51, FKBP5, FKBP51, FKBP54, HSP90 binding immunophilin, P54, PPIase, PPIase FKBP5, Ptg 10, Rotamase

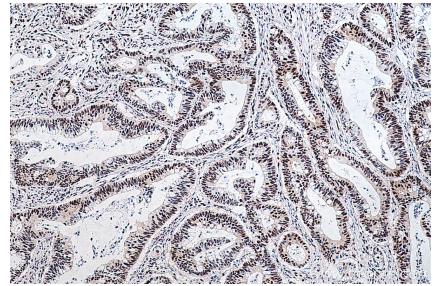
Selected Validation Data



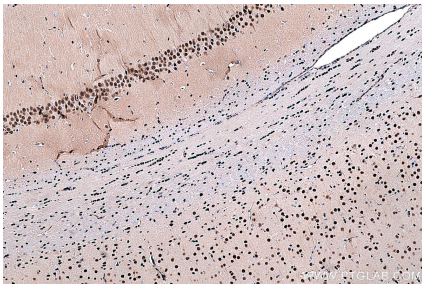
Immunohistochemical analysis of paraffin-embedded human liver tissue slide using KHC0418 (FKBP5 IHC Kit).



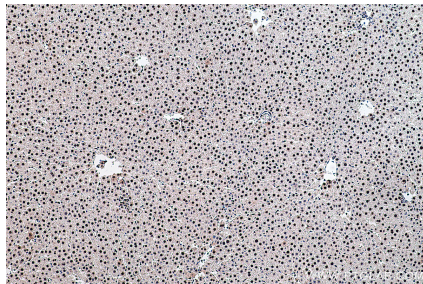
Immunohistochemical analysis of paraffin-embedded human liver cancer tissue slide using KHC0418 (FKBP5 IHC Kit).



Immunohistochemical analysis of paraffin-embedded human colon cancer tissue slide using KHC0418 (FKBP5 IHC Kit).



Immunohistochemical analysis of paraffin-embedded rat brain tissue slide using KHC0418 (FKBP5 IHC Kit).



Immunohistochemical analysis of paraffin-embedded rat liver tissue slide using KHC0418 (FKBP5 IHC Kit).