

IHC*easy* ACAT1 Ready-To-Use IHC Kit

Catalog Number: **KHC0504**

General Information

Sample type:
FFPE tissue

Cited sample type:

Reactivity:
Human, Mouse, Rat

Cited Reactivity:

Assay type:
Immunohistochemistry

Primary antibody type:
Rabbit Polyclonal

Secondary antibody type:
Polymer-HRP-Goat anti-Rabbit

Kit Component

Component	Size	Concentration
Antigen Retrieval Buffer	100 mL	50×
Washing Buffer	100 mL ×2	20×
Blocking Buffer	5 mL	RTU
Primary Antibody	5 mL	RTU
Secondary Antibody	5 mL	RTU
Chromogen Component A	0.2 mL	RTU
Chromogen Component B	4 mL	RTU
Signal Enhancer	5 mL	RTU
Counter Staining Reagent	5 mL	RTU
Mounting Media	5 mL	RTU
Control Slide	1 slide (Optional)	FFPE
Datasheet	1 Copy	
Manual	1 Copy	

Storage Instructions

All the reagents are stored at 2-8°C. The kit is stable for 6 months from the date of receipt.

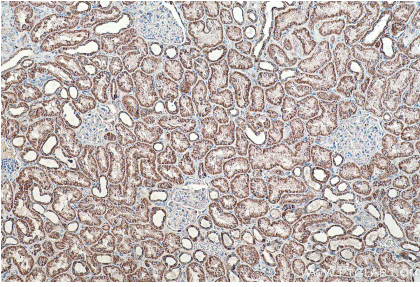
Background

ACAT1 (acetyl-CoA acetyltransferase), is a mitochondrial enzyme catalyzing the reversible formation or breakdown of acetoacetyl-CoA and plays important roles in ketogenesis and ketolysis. Deficiency of ACAT1 causes an inherited metabolic disorder. Recently ACAT1 has been reported to get involved in cancer progression.

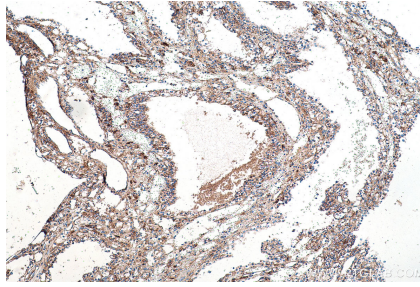
Synonyms

ACAT, ACAT1, Acetoacetyl CoA thiolase, MAT, T2, THIL

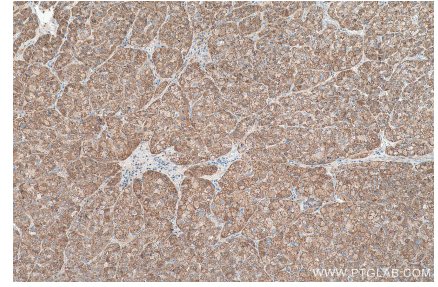
Selected Validation Data



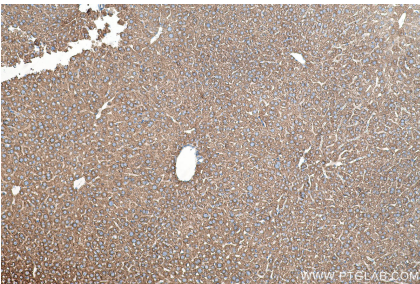
Immunohistochemical analysis of paraffin-embedded human kidney tissue slide using KHC0504 (ACAT1 IHC Kit).



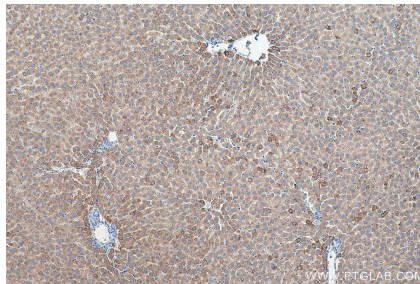
Immunohistochemical analysis of paraffin-embedded human renal cell carcinoma tissue slide using KHC0504 (ACAT1 IHC Kit).



Immunohistochemical analysis of paraffin-embedded human liver cancer tissue slide using KHC0504 (ACAT1 IHC Kit).



Immunohistochemical analysis of paraffin-embedded mouse liver tissue slide using KHC0504 (ACAT1 IHC Kit).



Immunohistochemical analysis of paraffin-embedded rat liver tissue slide using KHC0504 (ACAT1 IHC Kit).