

# IHC*easy* NR4A1 Ready-To-Use IHC Kit

Catalog Number: **KHC1558**

## General Information

**Sample type:**  
FFPE tissue

**Cited sample type:**

**Reactivity:**  
Human, Mouse, Rat

**Cited Reactivity:**

**Assay type:**  
Immunohistochemistry

**Primary antibody type:**  
Rabbit Polyclonal

**Secondary antibody type:**  
Polymer-HRP-Goat anti-Rabbit

## Kit Component

Component	Size	Concentration
Antigen Retrieval Buffer	100 mL	50×
Washing Buffer	100 mL ×2	20×
Blocking Buffer	5 mL	RTU
Primary Antibody	5 mL	RTU
Secondary Antibody	5 mL	RTU
Chromogen Component A	0.2 mL	RTU
Chromogen Component B	4 mL	RTU
Signal Enhancer	5 mL	RTU
Counter Staining Reagent	5 mL	RTU
Mounting Media	5 mL	RTU
Control Slide	1 slide (Optional)	FFPE
Datasheet	1 Copy	
Manual	1 Copy	

## Storage Instructions

All the reagents are stored at 2-8°C. The kit is stable for 6 months from the date of receipt.

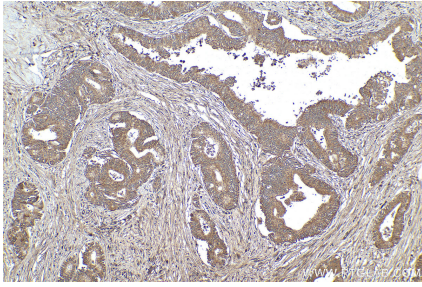
## Background

NR4A1 is an orphan nuclear receptor that act concomitantly with NURR1 in regulating the expression of delay-early genes during liver regeneration. Also NR4A1 has linked not only to cell apoptosis but also proliferation in response to growth factor. It plays a role in caspase-independent cell death by activation of the ERK pathway and increased activity of MEF2 transcription factors.

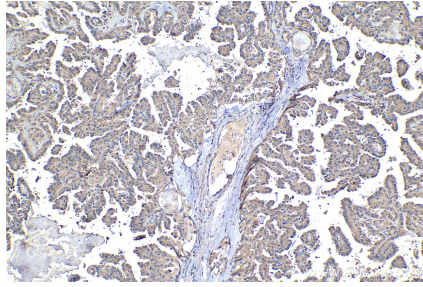
## Synonyms

Early response protein NAK1, GFRP1, HMR, N10, NAK 1, NAK1, NGFIB, NR4A1, NUR77, Orphan nuclear receptor HMR, Orphan nuclear receptor TR3, ST 59, Testicular receptor 3, TR3

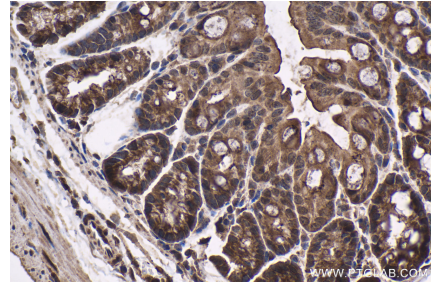
## Selected Validation Data



Immunohistochemical analysis of paraffin-embedded human pancreas cancer tissue slide using KHC1558 (NR4A1 IHC Kit).



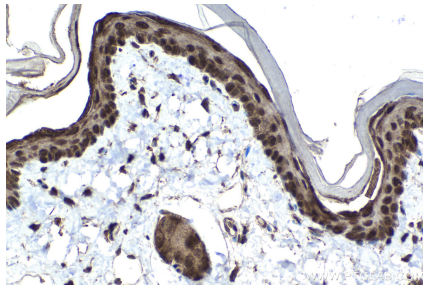
Immunohistochemical analysis of paraffin-embedded human thyroid cancer tissue slide using KHC1558 (NR4A1 IHC Kit).



Immunohistochemical analysis of paraffin-embedded mouse colon tissue slide using KHC1558 (NR4A1 IHC Kit).



Immunohistochemical analysis of paraffin-embedded rat colon tissue slide using KHC1558 (NR4A1 IHC Kit).



Immunohistochemical analysis of paraffin-embedded rat skin tissue slide using KHC1558 (NR4A1 IHC Kit).