

IHC*easy* STAT5A Ready-To-Use IHC Kit

Catalog Number: **KHC1594**

General Information

Sample type:
FFPE tissue

Cited sample type:

Reactivity:
Human, Mouse, Rat

Cited Reactivity:

Assay type:
Immunohistochemistry

Primary antibody type:
Mouse Monoclonal

Secondary antibody type:
Polymer-HRP-Goat anti-Mouse

Kit Component

Component	Size	Concentration
Antigen Retrieval Buffer	100 mL	50×
Washing Buffer	100 mL ×2	20×
Blocking Buffer	5 mL	RTU
Primary Antibody	5 mL	RTU
Secondary Antibody	5 mL	RTU
Chromogen Component A	0.2 mL	RTU
Chromogen Component B	4 mL	RTU
Signal Enhancer	5 mL	RTU
Counter Staining Reagent	5 mL	RTU
Mounting Media	5 mL	RTU
Control Slide	1 slide (Optional)	FFPE
Datasheet	1 Copy	
Manual	1 Copy	

Storage Instructions

All the reagents are stored at 2-8°C. The kit is stable for 6 months from the date of receipt.

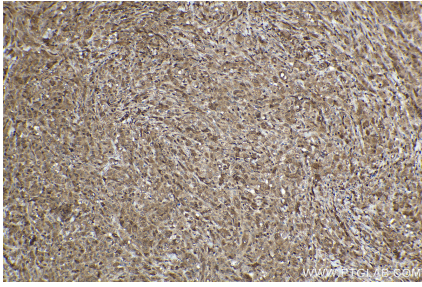
Background

STAT5A, also named as STAT5, belongs to the transcription factor STAT family. In response to cytokines and growth factors, STAT family members are phosphorylated by the receptor associated kinases, and then form homo- or heterodimers that translocate to the cell nucleus where they act as transcription activators. STAT5A is activated by, and mediates the responses of many cell ligands, such as IL2, IL3, IL7 GM-CSF, erythropoietin, thrombopoietin, and different GHs. Activation of STAT5A in myeloma and lymphoma associated with a TEL/JAK2 gene fusion is independent of cell stimulus and has been shown to be essential for the tumorigenesis. The mouse counterpart of human STAT5A is found to induce the expression of BCL2L1/BCL-X(L), which suggests the antiapoptotic function of STAT5A in cells.

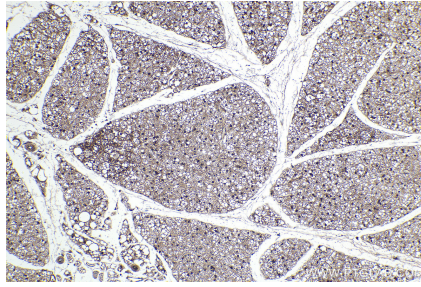
Synonyms

MGF, STAT5, STAT5A

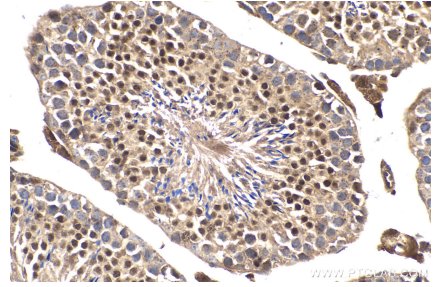
Selected Validation Data



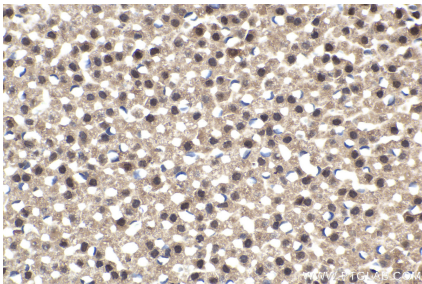
Immunohistochemical analysis of paraffin-embedded human lymphoma tissue slide using KHC1594 (STAT5A IHC Kit).



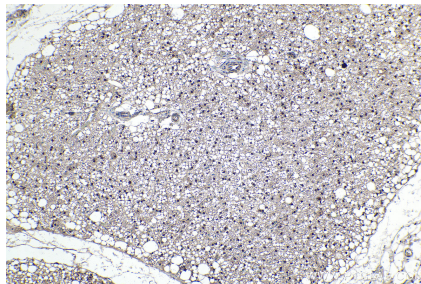
Immunohistochemical analysis of paraffin-embedded mouse brown adipose tissue slide using KHC1594 (STAT5A IHC Kit).



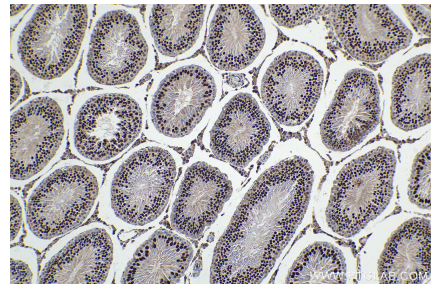
Immunohistochemical analysis of paraffin-embedded mouse testis tissue slide using KHC1594 (STAT5A IHC Kit).



Immunohistochemical analysis of paraffin-embedded rat adrenal gland tissue slide using KHC1594 (STAT5A IHC Kit).



Immunohistochemical analysis of paraffin-embedded rat brown adipose tissue slide using KHC1594 (STAT5A IHC Kit).



Immunohistochemical analysis of paraffin-embedded rat testis tissue slide using KHC1594 (STAT5A IHC Kit).