

IHC*easy* PRKCD Ready-To-Use IHC Kit

Catalog Number: **KHC1676**

General Information

Sample type:
FFPE tissue

Cited sample type:

Reactivity:
Human, Mouse, Rat

Cited Reactivity:

Assay type:
Immunohistochemistry

Primary antibody type:
Mouse Monoclonal

Secondary antibody type:
Polymer-HRP-Goat anti-Mouse

Kit Component

| Component | Size | Concentration |
|--------------------------|--------------------|---------------|
| Antigen Retrieval Buffer | 100 mL | 50× |
| Washing Buffer | 100 mL ×2 | 20× |
| Blocking Buffer | 5 mL | RTU |
| Primary Antibody | 5 mL | RTU |
| Secondary Antibody | 5 mL | RTU |
| Chromogen Component A | 0.2 mL | RTU |
| Chromogen Component B | 4 mL | RTU |
| Signal Enhancer | 5 mL | RTU |
| Counter Staining Reagent | 5 mL | RTU |
| Mounting Media | 5 mL | RTU |
| Control Slide | 1 slide (Optional) | FFPE |
| Datasheet | 1 Copy | |
| Manual | 1 Copy | |

Storage Instructions

All the reagents are stored at 2-8°C. The kit is stable for 6 months from the date of receipt.

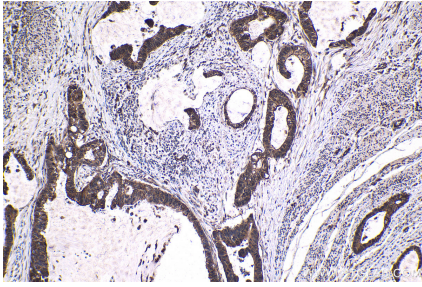
Background

PKC Delta (PRKCD) is a member of the PKC family, a phospholipid-dependent family of serine/threonine kinases, and is present in human neutrophils. Novel PKCs (PRKCD, PRKCE, PRKCH and PRKCQ) are calcium-insensitive, but activated by diacylglycerol (DAG) and phosphatidylserine. PKC δ is activated by inflammatory mediators involved in the inflammatory response including lipopolysaccharide (LPS), tumor necrosis factor (TNF) and interleukin-1 (IL-1). PKC δ activation requires multi-phosphorylation steps which triggers translocation from the cell cytosol to different subcellular compartments.

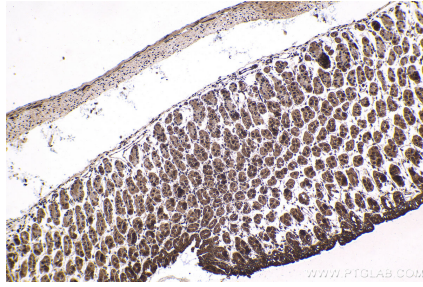
Synonyms

MAY1, PKCD, PRKCD, Protein kinase C delta type, protein kinase C, delta

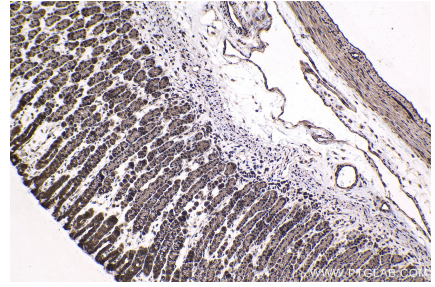
Selected Validation Data



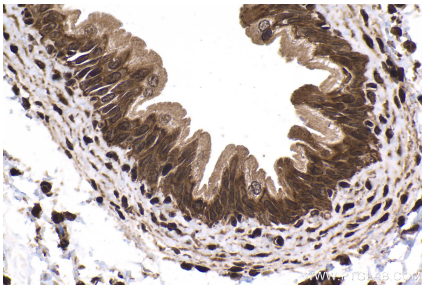
Immunohistochemical analysis of paraffin-embedded human urothelial carcinoma tissue slide using KHC1676 (PRKCD IHC Kit).



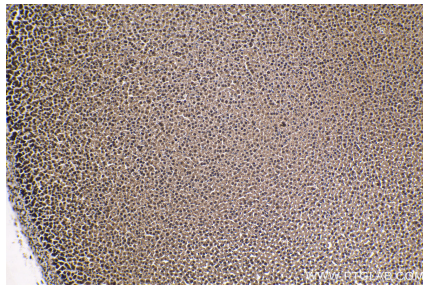
Immunohistochemical analysis of paraffin-embedded mouse stomach tissue slide using KHC1676 (PRKCD IHC Kit).



Immunohistochemical analysis of paraffin-embedded rat stomach tissue slide using KHC1676 (PRKCD IHC Kit).



Immunohistochemical analysis of paraffin-embedded rat bladder tissue slide using KHC1676 (PRKCD IHC Kit).



Immunohistochemical analysis of paraffin-embedded rat adrenal gland tissue slide using KHC1676 (PRKCD IHC Kit).