

# IHC*easy* LITAF Ready-To-Use IHC Kit

Catalog Number: **KHC1896**

## General Information

**Sample type:**  
FFPE tissue

**Cited sample type:**

**Reactivity:**  
Human, Mouse, Rat

**Cited Reactivity:**

**Assay type:**  
Immunohistochemistry

**Primary antibody type:**  
Rabbit Polyclonal

**Secondary antibody type:**  
Polymer-HRP-Goat anti-Rabbit

## Kit Component

Component	Size	Concentration
Antigen Retrieval Buffer	100 mL	50×
Washing Buffer	100 mL ×2	20×
Blocking Buffer	5 mL	RTU
Primary Antibody	5 mL	RTU
Secondary Antibody	5 mL	RTU
Chromogen Component A	0.2 mL	RTU
Chromogen Component B	4 mL	RTU
Signal Enhancer	5 mL	RTU
Counter Staining Reagent	5 mL	RTU
Mounting Media	5 mL	RTU
Control Slide	1 slide (Optional)	FFPE
Datasheet	1 Copy	
Manual	1 Copy	

## Storage Instructions

All the reagents are stored at 2-8°C. The kit is stable for 6 months from the date of receipt.

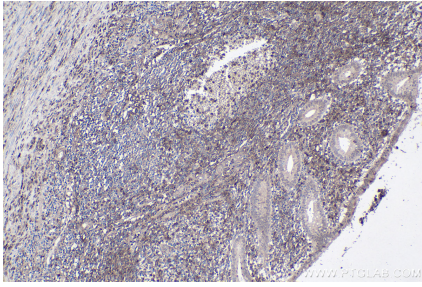
## Background

Lipopolysaccharide-induced TNF factor (LITAF) is a transcription factor that identified as a regulator of TNF-alpha gene expression. It may has a role in protein degradation pathways and in tumor necrosis factor alpha (TNF-alpha) gene expression. Also it may regulate the expression of the CCL2/MCP-1 chemokine through NFkB1. Defects in LITAF may be involved in extramammary Paget disease (EMPD) carcinogenesis.

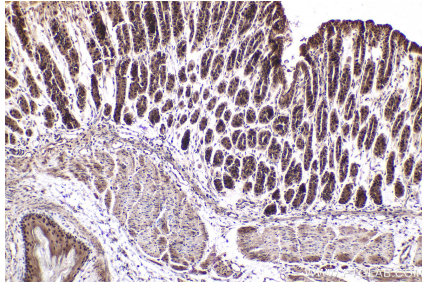
## Synonyms

LITAF, LPS induced TNF alpha factor, p53 induced gene 7 protein, PIG7, SIMPLE, TP53I7

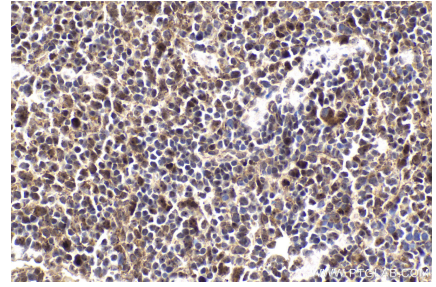
## Selected Validation Data



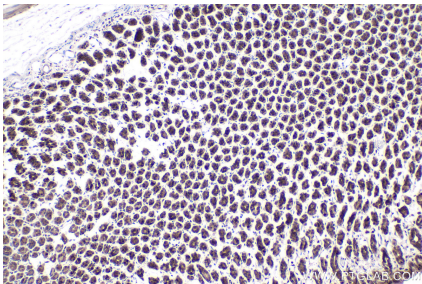
Immunohistochemical analysis of paraffin-embedded human appendicitis tissue slide using KHC1896 (LITAF IHC Kit).



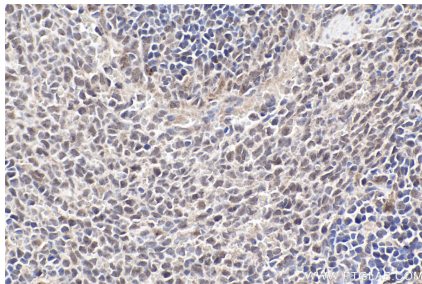
Immunohistochemical analysis of paraffin-embedded mouse stomach tissue slide using KHC1896 (LITAF IHC Kit).



Immunohistochemical analysis of paraffin-embedded mouse spleen tissue slide using KHC1896 (LITAF IHC Kit).



Immunohistochemical analysis of paraffin-embedded rat stomach tissue slide using KHC1896 (LITAF IHC Kit).



Immunohistochemical analysis of paraffin-embedded rat spleen tissue slide using KHC1896 (LITAF IHC Kit).