

For Research Use Only

# Gamma Catenin Polyclonal antibody

Catalog Number: 11146-1-AP

6 Publications



## Basic Information

**Catalog Number:**

11146-1-AP

**Size:**

500 ug/ml

**Source:**

Rabbit

**Isotype:**

IgG

**Immunogen Catalog Number:**

AG1627

**GenBank Accession Number:**

BC011865

**GeneID (NCBI):**

3728

**UNIPROT ID:**

P14923

**Full Name:**

junction plakoglobin

**Calculated MW:**

82 kDa

**Observed MW:**

82 kDa

**Purification Method:**

Antigen affinity purification

**Recommended Dilutions:**

WB 1:500-1:2000

IP 0.5-4.0 ug for 1.0-3.0 mg of total protein lysate

IHC 1:50-1:200

## Applications

**Tested Applications:**

WB, IHC, IP, ELISA

**Cited Applications:**

WB, IHC, IF, IP

**Species Specificity:**

human, mouse, rat

**Cited Species:**

human, mouse, rat

**Positive Controls:**

**WB :** mouse heart tissue, human heart tissue, HeLa cells, T-47D cells, A431 cells

**IP :** HT-29 cells,

**IHC :** human pancreas cancer tissue, human breast cancer tissue, human colon cancer tissue, human skin tissue

**Note-IHC: suggested antigen retrieval with TE buffer pH 9.0; (\*) Alternatively, antigen retrieval may be performed with citrate buffer pH 6.0**

## Background Information

Plakoglobin ( $\gamma$ -catenin), a member of the Armadillo proteins, plays important roles in cell adhesion with  $\alpha$ -catenin and  $\beta$ -catenin, is involved in Wnt signaling, and is translocated into the nucleus and binds LEF1. Plakoglobin is a major cytoplasmic component of both desmosomes and adherens junctions, and is the only known constituent common to submembranous plaques in both of these structures, which are located at the intercalated disc (ICD) of cardiomyocytes. Plakoglobin links cadherins to the actin cytoskeleton. Mutations in plakoglobin are associated with arrhythmogenic right ventricular dysplasia and Pemphigus vulgaris.

## Notable Publications

Author	Pubmed ID	Journal	Application
Bing Sun	27684953	PLoS One	WB
M Shriver	25381817	Oncogene	WB
Yili Fang	32560811	Biochem Biophys Res Commun	WB

## Storage

**Storage:**

Store at -20°C. Stable for one year after shipment.

**Storage Buffer:**

PBS with 0.02% sodium azide and 50% glycerol pH 7.3.

Aliquoting is unnecessary for -20°C storage

For technical support and original validation data for this product please contact:

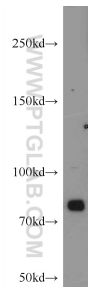
T: 4006900926

E: Proteintech-CN@ptglab.com

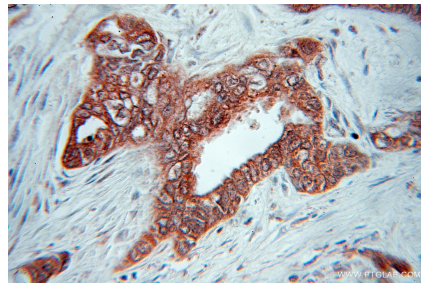
W: ptgcn.com

**This product is exclusively available under Proteintech Group brand and is not available to purchase from any other manufacturer.**

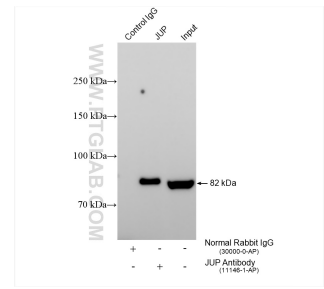
## Selected Validation Data



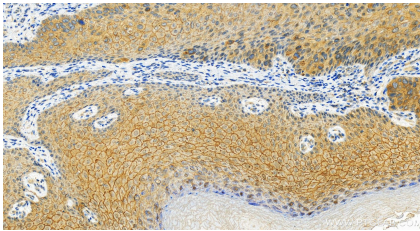
mouse heart tissue were subjected to SDS PAGE followed by western blot with 11146-1-AP (Plakoglobin/gamma catenin antibody at dilution of 1:1000 incubated at room temperature for 1.5 hours.



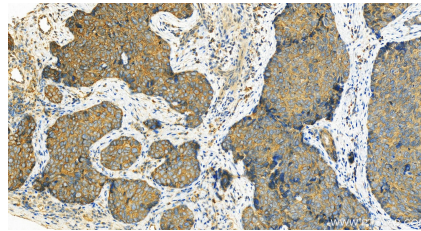
Immunohistochemical analysis of paraffin-embedded human pancreas cancer using 11146-1-AP (Plakoglobin/gamma catenin antibody) at dilution of 1:50 (under 10x lens).



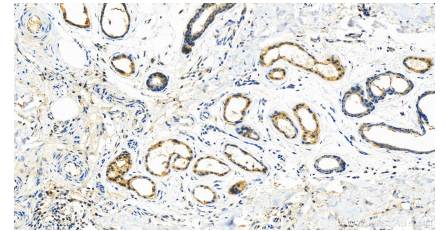
IP result of anti-Gamma Catenin (IP:11146-1-AP, 4ug; Detection:11146-1-AP 1:1000) with HT-29 cells lysate 1040 ug.



Immunohistochemical analysis of paraffin-embedded human Bowen disease slide using 11146-1-AP (Gamma Catenin antibody) at dilution of 1:200 (under 20x lens). Heat mediated antigen retrieval with Tris-EDTA buffer (pH 9.0).



Immunohistochemical analysis of paraffin-embedded human Bowen disease slide using 11146-1-AP (Gamma Catenin antibody) at dilution of 1:200 (under 20x lens). Heat mediated antigen retrieval with Tris-EDTA buffer (pH 9.0).



Immunohistochemical analysis of paraffin-embedded human Bowen disease slide using 11146-1-AP (Gamma Catenin antibody) at dilution of 1:200 (under 20x lens). Heat mediated antigen retrieval with Tris-EDTA buffer (pH 9.0).