

For Research Use Only

# COXIV Polyclonal antibody

Catalog Number: 11242-1-AP

Featured Product

476 Publications



## Basic Information

Catalog Number:

11242-1-AP

Concentration:

900 ug/ml

Source:

Rabbit

Isotype:

IgG

Immunogen Catalog Number:

AG1640

GenBank Accession Number:

BC021236

GeneID (NCBI):

1327

UNIPROT ID:

P13073

Full Name:

cytochrome c oxidase subunit IV isoform 1

Calculated MW:

19.6 kDa

Observed MW:

17-18 kDa

Purification Method:

Antigen affinity purification

Recommended Dilutions:

WB: 1:5000-1:20000

IP: 0.5-4.0 ug for 1.0-3.0 mg of total protein lysate

IHC: 1:200-1:1000

IF/ICC: 1:50-1:500

## Applications

Tested Applications:

WB, IHC, IF/ICC, IP, ELISA

Cited Applications:

WB, IHC, IF, IP, ChIP

Species Specificity:

human, mouse, rat

Cited Species:

human, mouse, rat, pig, canine, bovine, goat

**Note-IHC: suggested antigen retrieval with TE buffer pH 9.0; (\*) Alternatively, antigen retrieval may be performed with citrate buffer pH 6.0**

Positive Controls:

**WB** : HeLa cells, HepG2 cells, rat liver tissue, rat brain tissue, MCF-7 cells, NIH/3T3 cells, Jurkat cells, mouse skeletal muscle tissue

**IP** : mouse skeletal muscle tissue,

**IHC** : human prostate cancer tissue, human pancreas cancer tissue, human heart tissue

**IF/ICC** : HepG2 cells,

## Background Information

COX4l1, also named as COX4 and COXIV-1, belongs to the cytochrome c oxidase IV family. It is one of the nuclear-coded polypeptide chains of cytochrome c oxidase, the terminal oxidase in mitochondrial electron transport. COX4l1 is a marker for mitochondria. It has two isoforms (isoform 1 and 2). Isoform 1(COX4l1) is ubiquitously expressed and isoform 2 is highly expressed in lung tissues. COX4l1 is commonly used as a loading control. This antibody was generated against full length COX4l1 protein and cross reacts with COX4l2.

## Notable Publications

Author	Pubmed ID	Journal	Application
Enrico Zampese	36179023	Sci Adv	IF
Lu Lu	36183875	Environ Pollut	WB
Yipeng Du	30279144	EBioMedicine	WB

## Storage

Storage:

Store at -20°C. Stable for one year after shipment.

Storage Buffer:

PBS with 0.02% sodium azide and 50% glycerol, pH7.3

Aliquoting is unnecessary for -20°C storage

For technical support and original validation data for this product please contact:

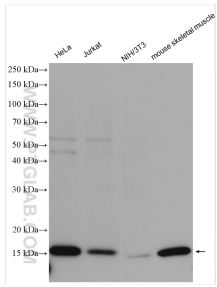
T: 4006900926

E: [Proteintech-CN@ptglab.com](mailto:Proteintech-CN@ptglab.com)

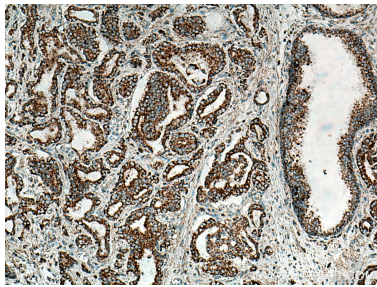
W: [ptgcn.com](http://ptgcn.com)

**This product is exclusively available under Proteintech Group brand and is not available to purchase from any other manufacturer.**

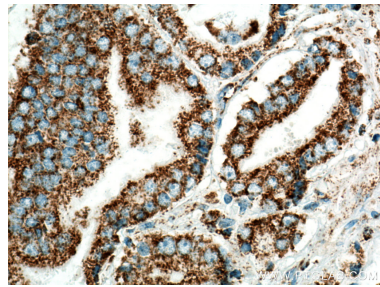
Selected Validation Data



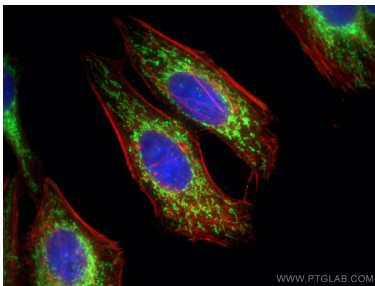
Various lysates were subjected to SDS PAGE followed by western blot with 11242-1-AP (COXIV antibody) at dilution of 1:10000 incubated at room temperature for 1.5 hours.



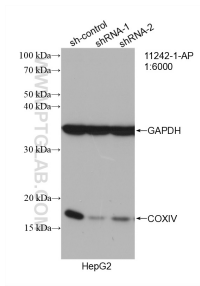
Immunohistochemical analysis of paraffin-embedded human prostate cancer tissue slide using 11242-1-AP (COXIV antibody) at dilution of 1:1000 (under 10x lens). Heat mediated antigen retrieval with Tris-EDTA buffer (pH 9.0).



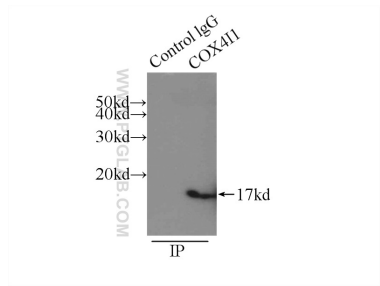
Immunohistochemical analysis of paraffin-embedded human prostate cancer tissue slide using 11242-1-AP (COXIV antibody) at dilution of 1:1000 (under 40x lens). Heat mediated antigen retrieval with Tris-EDTA buffer (pH 9.0).



Immunofluorescent analysis of (4% PFA) fixed HepG2 cells using COXIV antibody (11242-1-AP) at dilution of 1:200 and CoraLite® 488-Conjugated AffiniPure Goat Anti-Rabbit IgG(H+L), CL594-Phalloidin (red).



WB result of COXIV antibody (11242-1-AP; 1:6000; incubated at room temperature for 1.5 hours) with sh-Control and sh-COXIV transfected HepG2 cells.



IP result of anti-COXIV (IP:11242-1-AP, 3ug; Detection:11242-1-AP 1:1000) with mouse skeletal muscle tissue lysate 3500ug.