

For Research Use Only

COX6C Polyclonal antibody

Catalog Number: 11429-2-AP **1 Publications**



Basic Information

Catalog Number: 11429-2-AP	GenBank Accession Number: BC000187	Purification Method: Antigen affinity purification
Size: 240 µg/ml	GeneID (NCBI): 1345	Recommended Dilutions: WB 1:500-1:1000 IHC 1:20-1:200
Source: Rabbit	UNIPROT ID: P09669	
Isotype: IgG	Full Name: cytochrome c oxidase subunit VIc	
Immunogen Catalog Number: AG1982	Calculated MW: 75 aa, 9 kDa	
	Observed MW: 9 kDa	

Applications

Tested Applications: IHC, WB, ELISA	Positive Controls: WB : human heart tissue, IHC : human pancreas cancer tissue,
Cited Applications: WB	
Species Specificity: human, mouse, rat	
Cited Species: human	
Note-IHC: suggested antigen retrieval with TE buffer pH 9.0; (*) Alternatively, antigen retrieval may be performed with citrate buffer pH 6.0	

Background Information

Cytochrome c oxidase (COX) is the terminal oxidase in the respiratory chain in human and other mammalian cells. The enzyme is composed of 13 different subunits. COX6C (Cytochrome c oxidase subunit 6C) is one of the nuclear-coded polypeptide chains of cytochrome c oxidase, the terminal oxidase in mitochondrial electron transport.

Notable Publications

Author	Pubmed ID	Journal	Application
Oliva Claudia R CR	20870728	J Biol Chem	WB

Storage

Storage:
Store at -20°C. Stable for one year after shipment.
Storage Buffer:
PBS with 0.02% sodium azide and 50% glycerol pH 7.3.
Aliquoting is unnecessary for -20°C storage

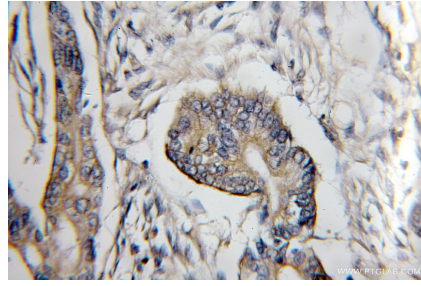
For technical support and original validation data for this product please contact:
T: 4006900926 E: Proteintech-CN@ptglab.com W: ptgcn.com

This product is exclusively available under Proteintech Group brand and is not available to purchase from any other manufacturer.

Selected Validation Data



human heart tissue were subjected to SDS PAGE followed by western blot with 11429-2-AP (COX6C antibody) at dilution of 1:400 incubated at room temperature for 1.5 hours.



Immunohistochemical analysis of paraffin-embedded human pancreas cancer using 11429-2-AP (COX6C antibody) at dilution of 1:50 (under 10x lens).