

For Research Use Only

SOD3 Polyclonal antibody

Catalog Number: 14316-1-AP

Featured Product

7 Publications



Basic Information

Catalog Number:

14316-1-AP

Size:

500 µg/ml

Source:

Rabbit

Isotype:

IgG

Immunogen Catalog Number:

AG5556

GenBank Accession Number:

BC014418

GeneID (NCBI):

6649

UNIPROT ID:

P08294

Full Name:

superoxide dismutase 3, extracellular

Calculated MW:

26 kDa

Observed MW:

25-33 kDa

Purification Method:

Antigen affinity purification

Recommended Dilutions:

WB 1:1000-1:4000

IP 0.5-4.0 µg for 1.0-3.0 mg of total protein lysate

Applications

Tested Applications:

WB, IP, ELISA

Cited Applications:

WB

Species Specificity:

human

Cited Species:

human, mouse, rat

Positive Controls:

WB : human urine sample, human heart tissue, human urine, human placenta tissue

IP : human placenta tissue,

Background Information

SOD is located intracellular (SOD-1; cytosolic, SOD-2; mitochondrial matrix) and extracellular (SOD-3), and catalyzes the dismutation of superoxide anion to H₂O₂. SOD3, or EC-SOD, is the most recently characterized SOD, exists as a copper and zinc-containing tetramer, and is synthesized containing a signal peptide that directs this enzyme exclusively to extracellular spaces. SOD-3 is a Mn-containing tetrameric protein with a subunit Mr of 24-35 kDa. The activity of EC-SOD is dependent on its ability to form a tetramer of 135 kDa.

Notable Publications

Author	Pubmed ID	Journal	Application
Xue Tian	34403689	Toxicol Appl Pharmacol	WB
Ai Wei	34378791	Br J Pharmacol	WB
Gedong Ming	34584879	Transl Pediatr	WB

Storage

Storage:

Store at -20°C. Stable for one year after shipment.

Storage Buffer:

PBS with 0.02% sodium azide and 50% glycerol pH 7.3.

Aliquoting is unnecessary for -20°C storage

For technical support and original validation data for this product please contact:

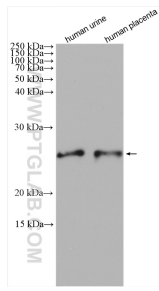
T: 4006900926

E: Proteintech-CN@ptglab.com

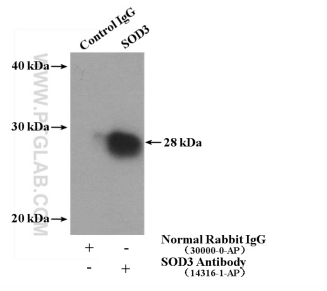
W: ptgcn.com

This product is exclusively available under Proteintech Group brand and is not available to purchase from any other manufacturer.

Selected Validation Data



Various lysates were subjected to SDS PAGE followed by western blot with 14316-1-AP (SOD3 antibody) at dilution of 1:2000 incubated at room temperature for 1.5 hours.



IP result of anti-SOD3 (IP:14316-1-AP, 4ug; Detection:14316-1-AP 1:1000) with human placenta tissue lysate 2800ug.