

For Research Use Only

Cytokeratin 8 Polyclonal antibody



Catalog Number: 17514-1-AP

11 Publications

Basic Information

Catalog Number: 17514-1-AP	GenBank Accession Number: NM_002273	Recommended Dilutions: WB 1:1000-1:8000 IHC 1:50-1:500
Size: 500 µg/ml	GeneID (NCBI): 3856	
Source: Rabbit	Full Name: keratin 8	
Isotype: IgG	Calculated MW: 54 kDa	
Purification Method: Antigen affinity purification	Observed MW: 54 kDa	
Immunogen Catalog Number:		

Applications

Tested Applications:

FC, IHC, WB, ELISA

Cited Applications:

IF, IHC, WB

Species Specificity:

human, rat, mouse

Cited Species:

hamster, human, mouse

Note-IHC: suggested antigen retrieval with TE buffer pH 9.0; (*) Alternatively, antigen retrieval may be performed with citrate buffer pH 6.0

Positive Controls:

WB : A431 cells; A549 cells, C6 cells, HeLa cells, MCF-7 cells

IHC : human breast cancer tissue; human prostate cancer tissue, human colon tissue, human stomach tissue

Background Information

Keratins are a large family of proteins that form the intermediate filament cytoskeleton of epithelial cells, which are classified into two major sequence types. Type I keratins are a group of acidic intermediate filament proteins, including K9-K23, and the hair keratins Ha1-Ha8. Type II keratins are the basic or neutral counterparts to the acidic type I keratins, including K1-K8, and the hair keratins, Hb1-Hb6. KRT8 is often paired with keratin 18 in vivo. This antibody is specifically against KRT8.

Notable Publications

Author	Pubmed ID	Journal	Application
Jiajun Xie	34482361	Signal Transduct Target Ther	WB,IHC
Mengjie Li	34845376	Oncogene	WB
Xiaoqiu Zhou	30655849	Oncol Lett	IHC

Storage

Storage:

Store at -20°C. Stable for one year after shipment.

Storage Buffer:

PBS with 0.02% sodium azide and 50% glycerol pH 7.3.

Aliquoting is unnecessary for -20°C storage

For technical support and original validation data for this product please contact:

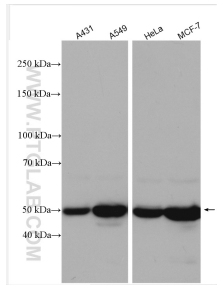
T: 4006900926

E: Proteintech-CN@ptglab.com

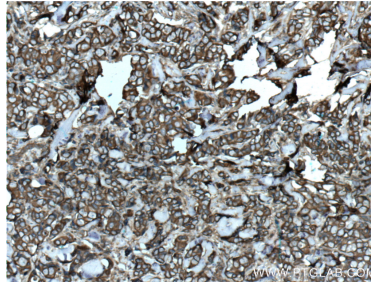
W: ptgcn.com

This product is exclusively available under Proteintech Group brand and is not available to purchase from any other manufacturer.

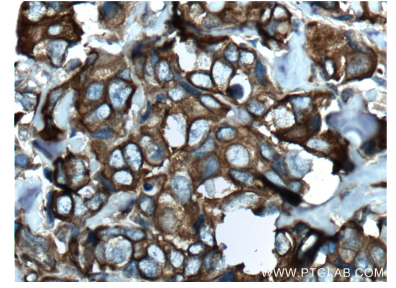
Selected Validation Data



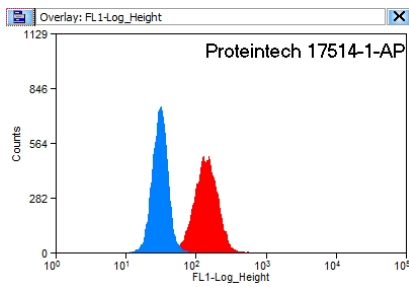
Various lysates were subjected to SDS PAGE followed by western blot with 17514-1-AP (Cytokeratin 8 antibody) at dilution of 1:8000 incubated at room temperature for 1.5 hours.



Immunohistochemical analysis of paraffin-embedded human breast cancer tissue slide using 17514-1-AP (Cytokeratin 8 antibody at dilution of 1:200 (under 10x lens). Heat mediated antigen retrieval with Tris-EDTA buffer (pH 9.0).



Immunohistochemical analysis of paraffin-embedded human breast cancer tissue slide using 17514-1-AP (Cytokeratin 8 antibody at dilution of 1:200 (under 40x lens). Heat mediated antigen retrieval with Tris-EDTA buffer (pH 9.0).



1X10⁶ HeLa cells were stained with 0.2ug Cytokeratin 8 antibody (17514-1-AP, red) and control antibody (blue). Fixed with 90% MeOH blocked with 3% BSA (30 min). Alexa Fluor 488-conjugated AffiniPure Goat Anti-Rabbit IgG(H+L) with dilution 1:1500.