

For Research Use Only

NOD2 Polyclonal antibody

Catalog Number:20980-1-AP

Featured Product

16 Publications



Basic Information

Catalog Number:

20980-1-AP

Size:

313 ug/ml

Source:

Rabbit

Isotype:

IgG

GenBank Accession Number:

NM_022162

GeneID (NCBI):

64127

UNIPROT ID:

Q9HC29

Full Name:

nucleotide-binding oligomerization domain containing 2

Calculated MW:

115 kDa

Purification Method:

Antigen affinity purification

Recommended Dilutions:

IHC 1:50-1:500

IF/ICC 1:50-1:500

Applications

Tested Applications:

IHC, IF/ICC, ELISA

Cited Applications:

WB, IHC, IF, IP

Species Specificity:

human

Cited Species:

human, mouse, rat, bovine

Positive Controls:

IHC : human colon tissue,

IF/ICC : HeLa cells,

Note-IHC: suggested antigen retrieval with TE buffer pH 9.0; (*) Alternatively, antigen retrieval may be performed with citrate buffer pH 6.0

Background Information

NOD2, also named as CARD15 and IBD1, induces NF-kappa-B via RICK (CARDIAK, RIP2) and IKK-gamma. It confers responsiveness to intracellular bacterial lipopolysaccharides (LPS). Defects in NOD2 are the cause of Blau syndrome (BS). Defects in NOD2 are a cause of susceptibility to Crohn disease (CD). Defects in NOD2 are a cause of susceptibility to ulcerative colitis. Defects in NOD2 are the cause of early-onset sarcoidosis (EOS). The antibody is specific to NOD2.

Notable Publications

Author	Pubmed ID	Journal	Application
Han Huirong H	23856489	Hypertension	WB
Jiajie Li	30367515	J Oral Pathol Med	IHC,IF
Subhash Mehto	36221902	EMBO J	WB

Storage

Storage:

Store at -20°C. Stable for one year after shipment.

Storage Buffer:

PBS with 0.02% sodium azide and 50% glycerol pH 7.3.

Aliquoting is unnecessary for -20°C storage

For technical support and original validation data for this product please contact:

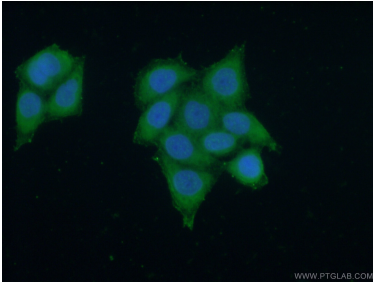
T: 4006900926

E: Proteintech-CN@ptglab.com

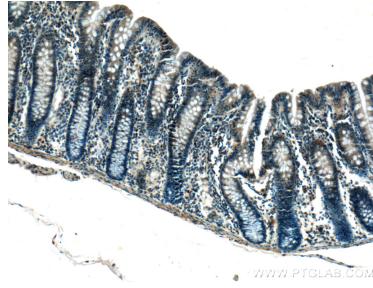
W: ptgcn.com

This product is exclusively available under Proteintech Group brand and is not available to purchase from any other manufacturer.

Selected Validation Data



Immunofluorescent analysis of (-20°C Ethanol) fixed HeLa cells using 20980-1-AP (NOD2 antibody) at dilution of 1:50 and Alexa Fluor 488-conjugated AffiniPure Goat Anti-Rabbit IgG(H+L).



Immunohistochemical analysis of paraffin-embedded human colon tissue slide using 20980-1-AP (NOD2 antibody) at dilution of 1:200 (under 10x lens).