

For Research Use Only

TBP Polyclonal antibody

Catalog Number: 22006-1-AP **82 Publications**



Basic Information

Catalog Number: 22006-1-AP	GenBank Accession Number: BC110341	Purification Method: Antigen affinity purification
Concentration: 450 µg/ml	GeneID (NCBI): 6908	Recommended Dilutions: WB 1:500-1:3000
Source: Rabbit	UNIPROT ID: P20226	IP 0.5-4.0 µg for 1.0-3.0 mg of total protein lysate
Isotype: IgG	Full Name: TATA box binding protein	IHC 1:250-1:1000
Immunogen Catalog Number: AG12383	Calculated MW: 338 aa, 38 kDa	
	Observed MW: mouse/rat 33-36 kDa and human 37-43 kDa	

Applications

Tested Applications: WB, IP, IHC, ELISA	Positive Controls: WB : COLO 320 cells,
Cited Applications: WB, IHC, IF, IP, ChIP	IP : COLO 320 cells,
Species Specificity: human, mouse, Rat	IHC : mouse testis tissue, human breast cancer tissue, rat liver tissue
Cited Species: human, mouse, rat, pig, monkey, sheep	

Note-IHC: suggested antigen retrieval with TE buffer pH 9.0; (*) Alternatively, antigen retrieval may be performed with citrate buffer pH 6.0

Background Information

The TATA binding protein (TBP) is a transcription factor that binds specifically to a DNA sequence TATA box. This DNA sequence is found about 25-30 base pairs upstream of the transcription start site in some eukaryotic gene promoters. TBP, along with a variety of TBP-associated factors, make up the TFIID, a general transcription factor that in turn makes up part of the RNA polymerase II preinitiation complex. As one of the few proteins in the preinitiation complex that binds DNA in a sequence-specific manner, it helps position RNA polymerase II over the transcription start site of the gene. However, it is estimated that only 10-20% of human promoters have TATA boxes. Therefore, TBP is probably not the only protein involved in positioning RNA polymerase II. This antibody recognize human TBP with MW 40 kDa and mouse/rat Tbp with MW 34 kDa.

Notable Publications

Author	Pubmed ID	Journal	Application
Qi Xiao	28944825	Mol Med Rep	WB
Qiu Zhong	36132230	Oxid Med Cell Longev	WB
Chang Wang	33013689	Front Endocrinol (Lausanne)	WB

Storage

Storage:
Store at -20°C. Stable for one year after shipment.
Storage Buffer:
PBS with 0.02% sodium azide and 50% glycerol pH 7.3.
Aliquoting is unnecessary for -20°C storage

For technical support and original validation data for this product please contact:

T: 4006900926

E: Proteintech-CN@ptglab.com

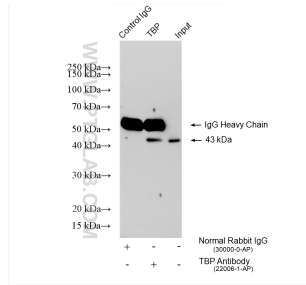
W: ptgcn.com

This product is exclusively available under Proteintech Group brand and is not available to purchase from any other manufacturer.

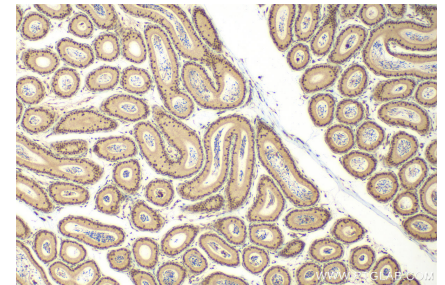
Selected Validation Data



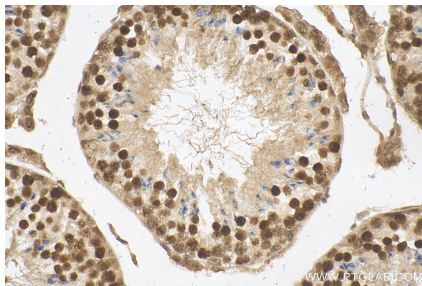
COLO 320 cells were subjected to SDS PAGE followed by western blot with 22006-1-AP (TBP antibody) at dilution of 1:1000 incubated at room temperature for 1.5 hours.



IP result of anti-TBP (IP:22006-1-AP, 4ug; Detection:22006-1-AP 1:500) with COLO 320 cells lysate 2560 ug.



Immunohistochemical analysis of paraffin-embedded mouse testis tissue slide using 22006-1-AP (TBP antibody) at dilution of 1:500 (under 10x lens). Heat mediated antigen retrieval with Tris-EDTA buffer (pH 9.0).



Immunohistochemical analysis of paraffin-embedded mouse testis tissue slide using 22006-1-AP (TBP antibody) at dilution of 1:500 (under 40x lens). Heat mediated antigen retrieval with Tris-EDTA buffer (pH 9.0).