

For Research Use Only

ATG7 Polyclonal antibody

Catalog Number: 28413-1-AP

Featured Product

1 Publications



Basic Information

Catalog Number:

28413-1-AP

Concentration:

500 ug/ml

Source:

Rabbit

Isotype:

IgG

Immunogen Catalog Number:

AG29172

GenBank Accession Number:

BC000091

GeneID (NCBI):

10533

UNIPROT ID:

O95352

Full Name:

ATG7 autophagy related 7 homolog
(S. cerevisiae)

Calculated MW:

78 kDa

Observed MW:

68-70 kDa

Purification Method:

Antigen affinity purification

Recommended Dilutions:

WB: 1:1000-1:5000

IHC: 1:50-1:500

Applications

Tested Applications:

WB, IHC, ELISA

Cited Applications:

WB

Species Specificity:

human

Cited Species:

human

Positive Controls:

WB : HeLa cells,

IHC : human cervical cancer tissue,

**Note-IHC: suggested antigen retrieval with
TE buffer pH 9.0; (*) Alternatively, antigen
retrieval may be performed with citrate
buffer pH 6.0**

Background Information

Atg7 is an E1-like enzyme that is specifically involved in autophagosome formation and is essential for autophagy. As an autophagic-related protein it is required for linking to Atg12, Atg5 and Atg8, which are essential for Atg conjugation and autophagosome formation. Atg7 has been reported as an important regulator of autophagy with starvation-induced or chemotherapeutic agent treatment. The high expression level of ATG7 is related to the survival of patients with breast cancer. There are several isoforms of ATG7 protein ranged from 68 kDa to 78 kDa.

Notable Publications

| Author | Pubmed ID | Journal | Application |
|---------|-----------|-------------|-------------|
| Li Chen | 39808866 | Tissue Cell | WB |

Storage

Storage:

Store at -20°C. Stable for one year after shipment.

Storage Buffer:

PBS with 0.02% sodium azide and 50% glycerol, pH7.3

Aliquoting is unnecessary for -20°C storage

For technical support and original validation data for this product please contact:

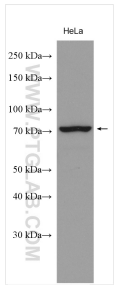
T: 4006900926

E: Proteintech-CN@ptglab.com

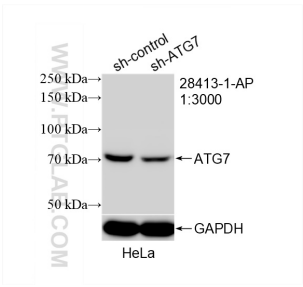
W: ptgcn.com

This product is exclusively available under Proteintech Group brand and is not available to purchase from any other manufacturer.

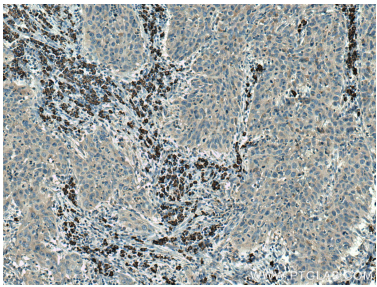
Selected Validation Data



HeLa cell lysates were subjected to SDS PAGE followed by western blot with 28413-1-AP (ATG7 antibody) at dilution of 1:2500 incubated at room temperature for 1.5 hours.



WB result of ATG7 antibody (28413-1-AP; 1:3000; incubated at room temperature for 1.5 hours) with sh-Control and sh-ATG7 transfected HeLa cells.



Immunohistochemical analysis of paraffin-embedded human cervical cancer tissue slide using 28413-1-AP (ATG7 antibody) at dilution of 1:200 (under 10x lens). Heat mediated antigen retrieval with Tris-EDTA buffer (pH 9.0).