

For Research Use Only

MCL1 Monoclonal antibody

Catalog Number: 66026-1-Ig

Featured Product

18 Publications



Basic Information

Catalog Number: 66026-1-Ig	GenBank Accession Number: BC107735	Purification Method: Protein A purification
Size: 1400 µg/ml	GeneID (NCBI): 4170	CloneNo.: 1E3C2
Source: Mouse	UNIPROT ID: Q07820	Recommended Dilutions: WB 1:2000-1:10000 IHC 1:250-1:1000 IF/ICC 1:200-1:800
Isotype: IgG2b	Full Name: myeloid cell leukemia sequence 1 (BCL2-related)	
Immunogen Catalog Number: AG10609	Calculated MW: 350 aa, 37 kDa	

Applications

Tested Applications: IF/ICC, IHC, WB, ELISA	Positive Controls: WB : HeLa cells, A431 cells, A549 cells, Jurkat cells, Raji cells, Ramos cells, Daudi cells IHC : human breast cancer tissue, IF/ICC : HeLa cells, MCF-7 cells
Cited Applications: WB, IP, IHC, CoIP	
Species Specificity: human	
Cited Species: human, rat, mouse	

Note-IHC: suggested antigen retrieval with TE buffer pH 9.0; (*) Alternatively, antigen retrieval may be performed with citrate buffer pH 6.0

Background Information

MCL-1 is an anti-apoptotic member of the Bcl-2 family originally isolated from the ML-1 human myeloid leukemia cell line. Similar to BCL2 and BCL2L1, MCL1 can interact with BAX and/or BAK1 to inhibit mitochondria-mediated apoptosis. Mcl-1 is critical for the proliferation and survival of myeloma cells in vitro, and overexpression of Mcl-1 protein in myeloma cells is associated with relapse and short event-free survival in multiple myeloma patients. Recent studies show that MCL-1 is upregulated in numerous haematological and solid tumour malignancies. Therefore, MCL-1 has been suggested as a potential new therapeutic target.

Notable Publications

Author	Pubmed ID	Journal	Application
Chan Yang	36232694	Int J Mol Sci	WB
Yingyan Han	31423895	Epigenetics	WB
Yongzhong Gu	31753743	Reprod Biol	WB

Storage

Storage:
Store at -20°C. Stable for one year after shipment.
Storage Buffer:
PBS with 0.02% sodium azide and 50% glycerol pH 7.3.
Aliquoting is unnecessary for -20°C storage

For technical support and original validation data for this product please contact:

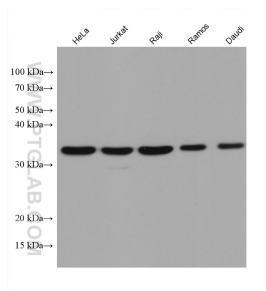
T: 4006900926

E: Proteintech-CN@ptglab.com

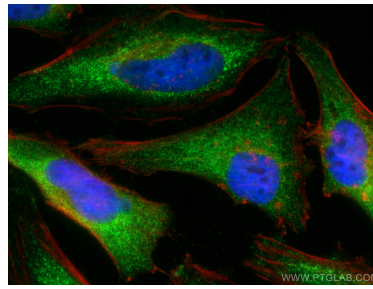
W: ptgcn.com

This product is exclusively available under Proteintech Group brand and is not available to purchase from any other manufacturer.

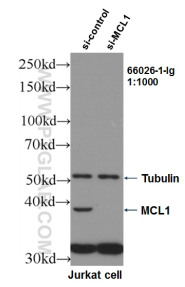
Selected Validation Data



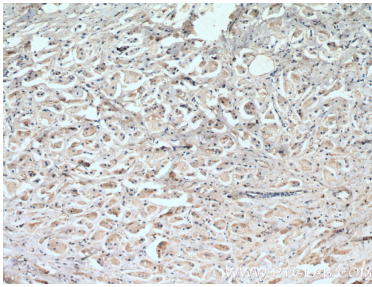
Various lysates were subjected to SDS PAGE followed by western blot with 66026-1-Ig (MCL1 antibody) at dilution of 1:5000 incubated at room temperature for 1.5 hours.



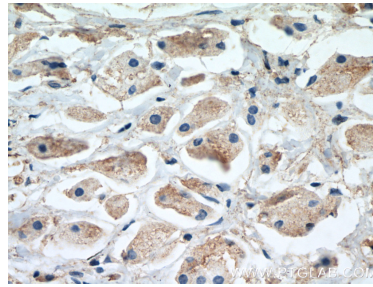
Immunofluorescent analysis of (4% PFA) fixed HeLa cells using MCL1 antibody (66026-1-Ig, Clone: 1E3C2) at dilution of 1:400 and CoraLite® 488-Conjugated AffiniPure Goat Anti-Mouse IgG(H+L), CL594-Phalloidin (red).



WB result of MCL1 antibody (66026-1-Ig, 1:1000) with si-Control and si-MCL1 transfected Jurkat cells.



Immunohistochemical analysis of paraffin-embedded human breast cancer tissue slide using 66026-1-Ig (MCL1 antibody) at dilution of 1:500 (under 10x lens. Heat mediated antigen retrieval with Tris-EDTA buffer (pH 9.0).



Immunohistochemical analysis of paraffin-embedded human breast cancer tissue slide using 66026-1-Ig (MCL1 antibody) at dilution of 1:500 (under 40x lens. Heat mediated antigen retrieval with Tris-EDTA buffer (pH 9.0).