

For Research Use Only

CoraLite® Plus 488-conjugated Cytokeratin 18 Monoclonal antibody



Catalog Number: **CL488-66187**

Basic Information

Catalog Number: CL488-66187	GenBank Accession Number: BC000180	Purification Method: Protein G purification
Size: 1000 µg/ml	GeneID (NCBI): 3875	CloneNo.: 1G11C4
Source: Mouse	UNIPROT ID: P05783	Recommended Dilutions: IF/ICC 1:50-1:500
Isotype: IgG1	Full Name: keratin 18	Excitation/Emission maxima wavelengths: 493 nm / 522 nm
Immunogen Catalog Number: AG1260	Calculated MW: 48 kDa	

Applications

Tested Applications: IF/ICC, FC (Intra)	Positive Controls: IF/ICC : HeLa cells, HepG2 cells, MDCK cells
Species Specificity: human, canine	

Background Information

Keratins are a large family of proteins that form the intermediate filament cytoskeleton of epithelial cells, which are classified into two major sequence types. Type I keratins are a group of acidic intermediate filament proteins, including K9-K23, and the hair keratins Ha1-Ha8. Type II keratins are the basic or neutral counterparts to the acidic type I keratins, including K1-K8, and the hair keratins, Hb1-Hb6. KRT18, also named as CYK18, PIG46 and K18, is the most commonly found members of the intermediate filament gene family. KRT18 is a type I keratin which is found primarily in non squamous epithelia and is present in a majority of adenocarcinomas and ductal carcinomas but not in squamous cell carcinomas. The antibody is conjugated with CL488, Ex/Em 488 nm/515 nm.

Storage

Storage:
Store at -20°C. Avoid exposure to light. Stable for one year after shipment.
Storage Buffer:
PBS with 50% Glycerol, 0.05% Proclin300, 0.5% BSA, pH 7.3.
Aliquoting is unnecessary for -20°C storage

For technical support and original validation data for this product please contact:

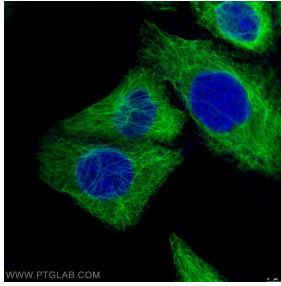
T: 4006900926

E: Proteintech-CN@ptglab.com

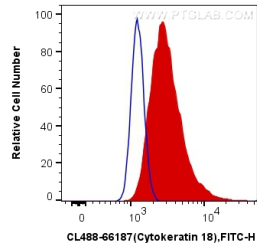
W: ptgcn.com

This product is exclusively available under Proteintech Group brand and is not available to purchase from any other manufacturer.

Selected Validation Data



Immunofluorescent analysis of (-20°C Ethanol) fixed HeLa cells using CL488-66187 (Cytokeratin 18 antibody) at dilution of 1:100.



1X10⁶ HeLa cells were intracellularly stained with 0.5 ug CoraLite® Plus 488 Anti-Human Cytokeratin 18 (CL488-66187, Clone:1G11C4) (red), or 0.5 ug Control Antibody. Cells were fixed with 4% PFA and permeabilized with Flow Cytometry Perm Buffer (PF00011-C).