

For Research Use Only

CoraLite® Plus 488-conjugated ADH1B Monoclonal antibody



Catalog Number: CL488-66939

Featured Product

Basic Information

Catalog Number:

CL488-66939

Size:

1000 µg/ml

Source:

Mouse

Isotype:

IgG2a

Immunogen Catalog Number:

AG10630

GenBank Accession Number:

BC033009

GeneID (NCBI):

125

UNIPROT ID:

P00325

Full Name:

alcohol dehydrogenase 1B (class I),
beta polypeptide

Calculated MW:

375 aa, 40 kDa

Observed MW:

35-40 kDa

Purification Method:

Protein A purification

CloneNo.:

1F1B4

Recommended Dilutions:

IF/ICC 1:50-1:500

Excitation/Emission maxima
wavelengths:

488 nm / 515 nm

Applications

Tested Applications:

IF/ICC

Species Specificity:

Human, Mouse, Rat, Pig

Positive Controls:

IF/ICC : HepG2 cells,

Background Information

The ADH1B gene encodes the beta subunit of class I alcohol dehydrogenase (ADH), an enzyme that catalyzes the rate-limiting step for ethanol metabolism: the oxidation of alcohol to acetaldehyde. Class 1 ADH is a homo- or heterodimeric molecule, formed by the association of 3 types of class I ADH subunits, alpha (ADH1A), beta, and gamma (ADH1C). ADH1B is also named as ADH2 and belongs to the zinc-containing alcohol dehydrogenase family. This protein can exist as a homodimer (PMID:19365573).

Storage

Storage:

Store at -20°C. Avoid exposure to light.

Storage Buffer:

PBS with 50% Glycerol, 0.05% Proclin300, 0.5% BSA, pH 7.3.

Aliquoting is unnecessary for -20°C storage

For technical support and original validation data for this product please contact:

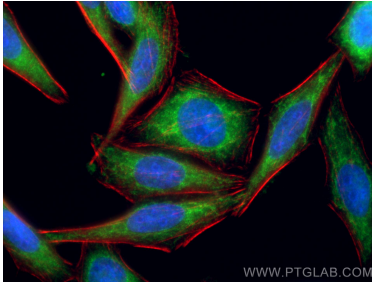
T: 4006900926

E: Proteintech-CN@ptglab.com

W: ptgcn.com

This product is exclusively available under Proteintech Group brand and is not available to purchase from any other manufacturer.

Selected Validation Data



Immunofluorescent analysis of (-20°C Ethanol) fixed HepG2 cells using CoraLite® Plus 488 ADH1B antibody (CL488-66939, Clone: 1F1B4) at dilution of 1:200, CL594-Phalloidin (red), DAPI (blue).