

For Research Use Only

CoraLite®555-conjugated 14-3-3 Sigma Monoclonal antibody



Catalog Number:CL555-66251

Basic Information

Catalog Number:

CL555-66251

Size:

1000 µg/ml

Source:

Mouse

Isotype:

IgG1

Immunogen Catalog Number:

AG12644

GenBank Accession Number:

BC002995

GeneID (NCBI):

2810

UNIPROT ID:

P31947

Full Name:

stratifin

Calculated MW:

28 kDa

Observed MW:

28-30 kDa

Purification Method:

Protein G purification

CloneNo.:

3F10D9

Recommended Dilutions:

IF/ICC 1:50-1:500

Excitation/Emission maxima

wavelengths:

557 nm / 570 nm

Applications

Tested Applications:

IF/ICC, FC (Intra)

Species Specificity:

human

Positive Controls:

IF/ICC : MCF-7 cells,

Background Information

14-3-3 Sigma is a member 14-3-3 family of highly conserved proteins participating in diverse cellular processes including cell cycle progression. It is exclusively present in various epithelial cells, and alternatively named as human epithelial marker (HEM), or stratifin. Alteration of its expression has been linked to cancer.

Storage

Storage:

Store at -20°C. Avoid exposure to light.

Storage Buffer:

PBS with 50% Glycerol, 0.05% Proclin300, 0.5% BSA, pH 7.3.

Aliquoting is unnecessary for -20°C storage

For technical support and original validation data for this product please contact:

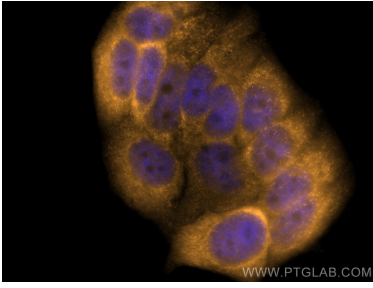
T: 4006900926

E: Proteintech-CN@ptglab.com

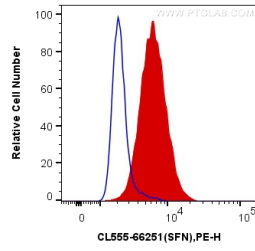
W: ptgcn.com

This product is exclusively available under Proteintech Group brand and is not available to purchase from any other manufacturer.

Selected Validation Data



Immunofluorescent analysis of (4% PFA) fixed MCF-7 cells using Coralite@555 14-3-3 Sigma antibody (CL555-66251, Clone: 3F10D9) at dilution of 1:200.



1X10⁶ A431 cells were intracellularly stained with 0.4 ug Coralite@555 Anti-Human 14-3-3 Sigma (CL555-66251, Clone:3F10D9) (red), or 0.4 ug Control Antibody. Cells were fixed with 4% PFA and permeabilized with Flow Cytometry Perm Buffer (PF00011-C).